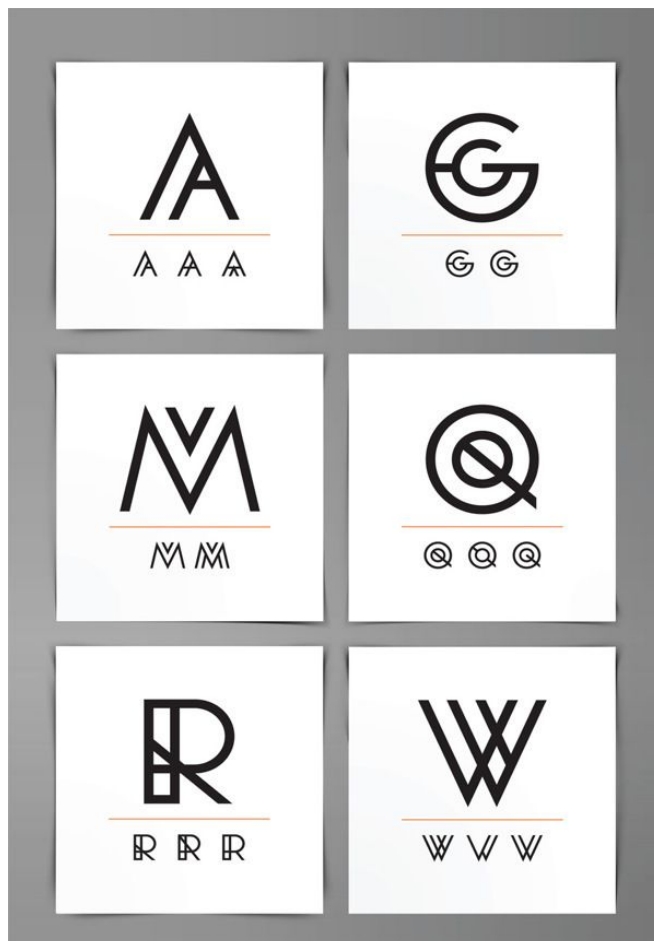


Some style's/ideas I like for the logo

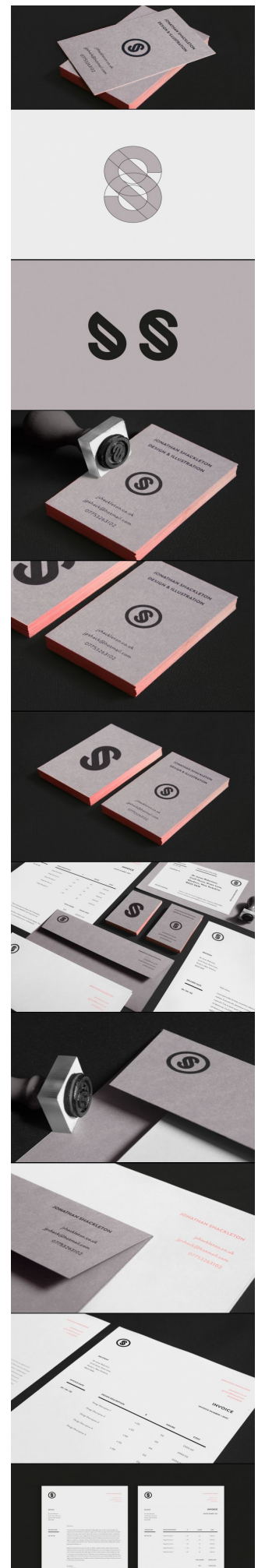
Like the idea of running a line thru the WWWW

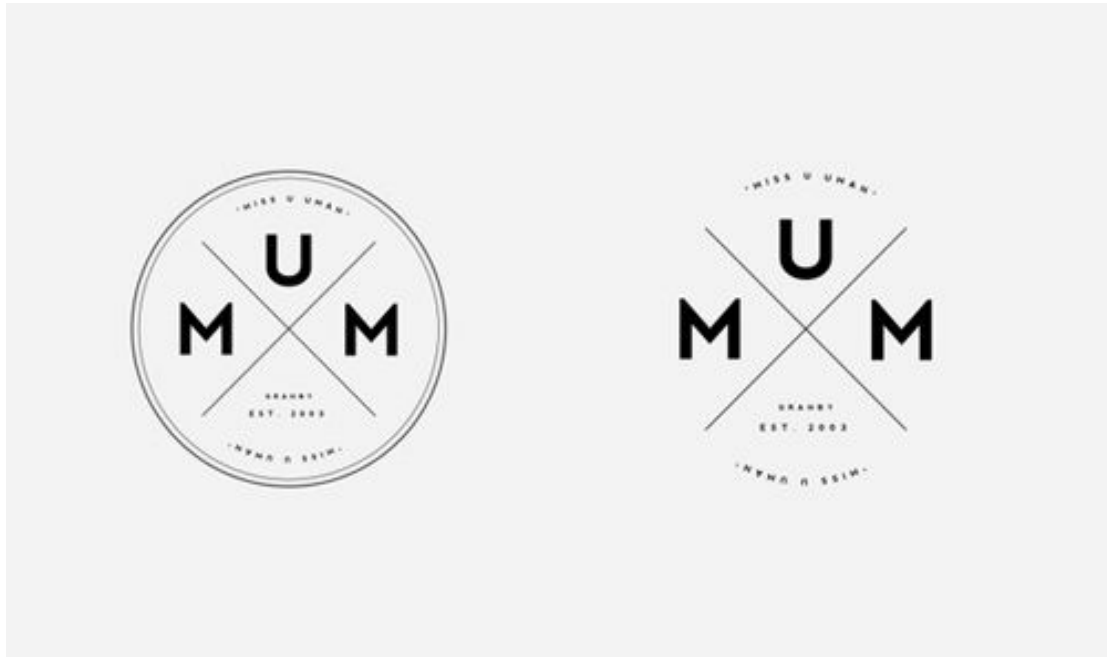


Like a style of each W being different? With a contrast colour



Like the idea of the W being a icon that can be applied to letterhead – developed into a stamp etc – using it to brand things?





Also don't mind the use of other shapes and a old EST feel (likening the company to a store or business eg: EST 2011)

Also like the use of black – bronze or a muted silver





Like the use of lines and patterns in this logo development