

# Mild Steel Platform Scale

Model : WS01P1218MC2000

Solid and robust, these industrial platform scales are ideal for industrial weighing applications and forklift loading. Constructed from mild steel, they incorporate IP67 rated load cells and are trade approved.

## FEATURES

WS01P1218MC2000

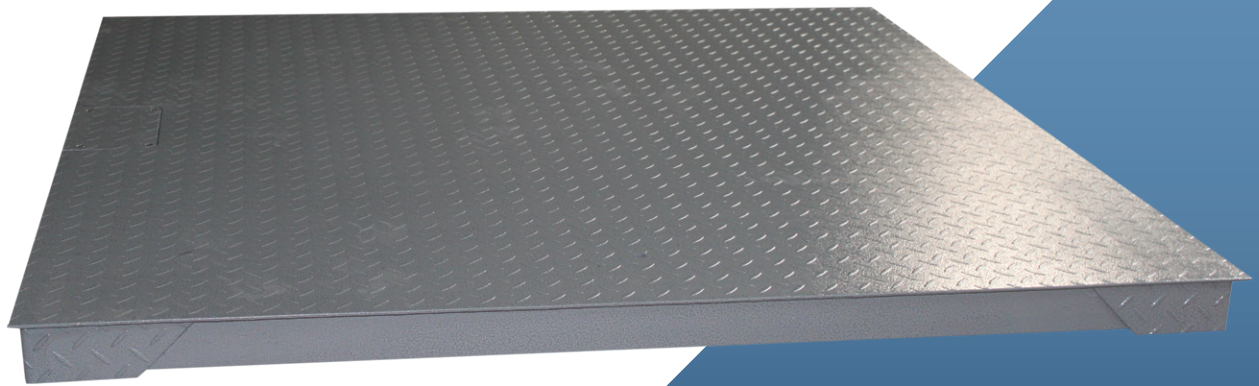
- legal for trade use
- heavy duty low profile weigh platform
- solid robust mild steel construction with powder coated finish
- ball and cup swivel mount levelling legs
- 4 x 2000kg IP-67 alloy tool steel load cells
- ideal for industrial applications and forklift loading
- low profile, 130mm overall height

## SPECIFICATIONS

Platform Size (mm): 1200 (W) x 1800 (D) x 130 (H)  
Net Weight: 130 kg  
Capacities: 1500 kg x 0.5 kg  
3000 kg x 1.0 kg

## OPTIONS

- wall or desk mounted display options
- alternate platform sizes available
- optional stainless steel, IP-68 versions available



Specifications may change without notice.