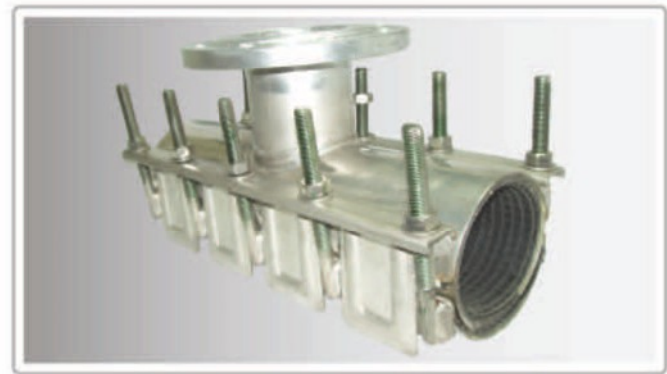
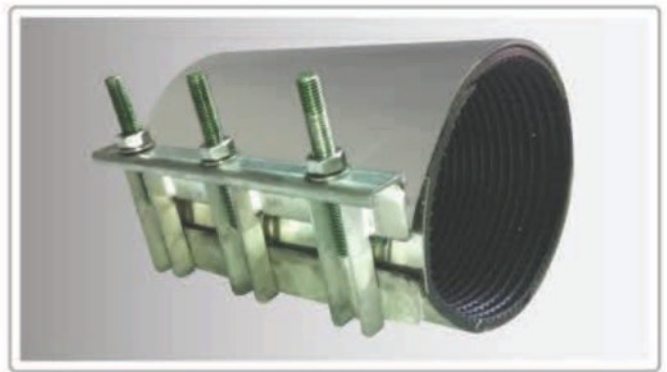
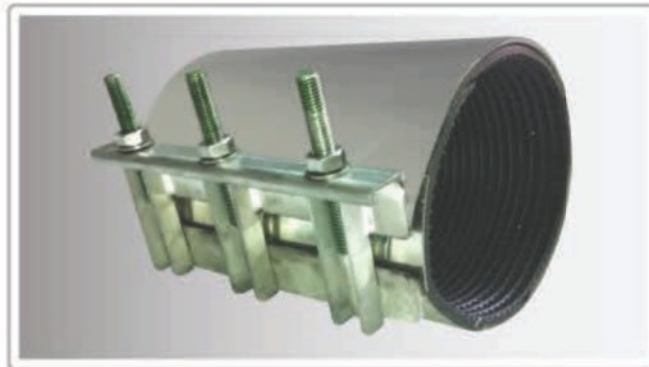


RUA Stainless Steel Repair Clamps



RUA 'Easy Fix' Stainless Steel Single Band Repair Clamps

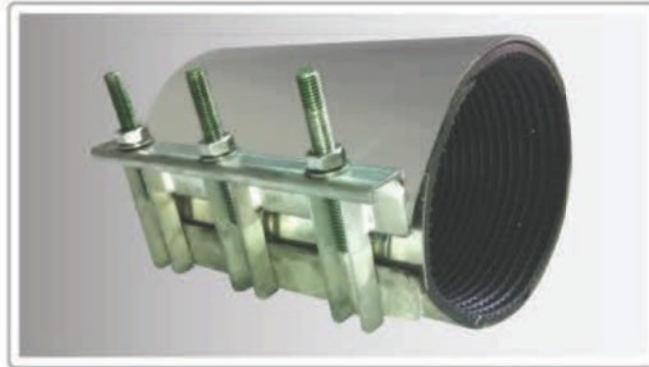


General Information

Suitable for pipe materials:	Ductile Iron, Cast Iron, Steel, AC, PVC, PE, GRP
Clamp Use:	Fast and permanent repair of damaged pipes including pin holes, frost damage, longitudinal cracks and full circumferential damage.
Sizes (diameter):	48mm—254mm
Working Range:	7mm-11mm Depending on size
Available Lengths:	150mm, 200mm, 210mm, 250mm, 300mm, 400mm
Working Pressure :	16 bar for diameters 40mm—150mm 10 bar for diameters 175mm—300mm
Materials:	304 stainless Steel, grade 316 available on request EPDM waffle gasket
Tightening Torque:	9 kg/m
Studs:	Studs grade 304 stainless steel M14 and are coated with either a special wax coating or PTFE Teflon so as to prevent galling during nut tightening.

All metal parts , after welding, are subjected to a pickling and passivation process for restoring

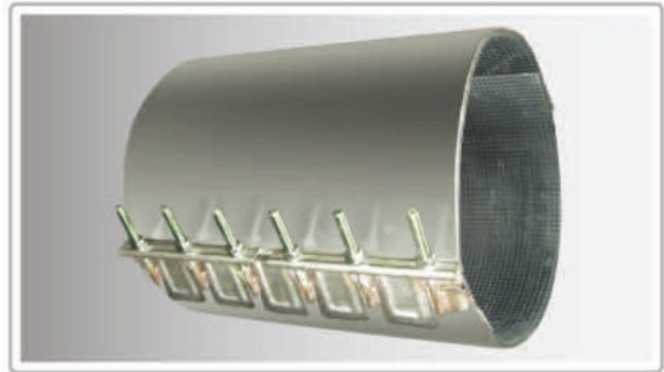
RUA 'Easy Fix' Stainless Steel Single Band Repair Clamps



RUA 'EASY FIX' STAINLESS STEEL SNAP CLAMPS

CODE	WORKING PRESSURE (bar)	RANGE (mm)	LENGTH (mm)	NO. OF BANDS
RCS044-051-150	16	44-51	150	1
RCS046-050-150	16	46-50	150	1
RCS050-057-150	16	50-57	150	1
RCS057-064-150	16	57-64	150	1
RCS060-067-150	16	60-67	150	1
RCS067-074-150	16	67-74	150	1
RCS075-083-200	16	75-83	200	1
RCS082-097-200	16	82-97	200	1
RCS087-097-200	16	87-97	200	1
RCS102-112-200	16	102-113	200	1
RCS108-118-200	16	108-118	200	1
RCS139-150-200	16	139-150	200	1
RCS159-170-200	16	159-170	200	1
RCS168-180-200	16	168-180	200	1

RUA 'Top Fix' Stainless Steel Double Band Repair Clamps



General Information

Suitable for pipe materials: Ductile Iron, Cast Iron, Steel, AC, PVC, PE, GRP

Clamp Use: Fast and permanent repair of damaged pipes including pin holes, frost damage, longitudinal cracks and full circumferential damage.

Sizes (diameter): 78mm—710mm

Working Range: 20mm

Available Lengths: 150mm, 200mm, 210mm, 250mm, 300mm, 400mm

Working Pressure :
16 bar for diameters 78mm—150mm
10 bar for diameters 175mm—500mm
6 bar for diameter 600mm
4 bar for diameter 700mm

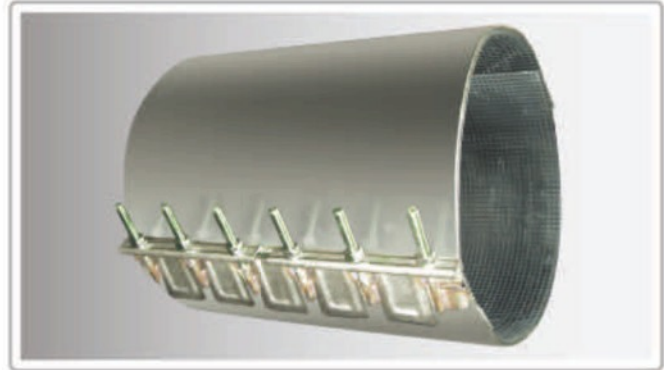
Materials:
304 stainless Steel, grade 316 available on request
EPDM waffle gasket

Tightening Torque: 9 kg/m

Studs: Studs grade 304 stainless steel M14 and are coated with either a special wax coating or PTFE Teflon so as to prevent galling during nut tightening.

All metal parts , after welding, are subjected to a pickling and passivation process for restoring corrosion resistance

RUA 'Top Fix' Stainless Steel Double Band Repair Clamps



RUA 'TOP FIX' STAINLESS STEEL SNAP CLAMPS

CODE	WORKING PRESSURE (bar)	RANGE (mm)	LENGTH (mm)	NO. OF BANDS
RCD088-110-200	16	44-51	200	2
RCD108-128-200	16	46-50	200	2
RCD133-155-200	16	50-57	200	2
RCD138-160-200	16	57-64	200	2
RCD158-180-200	16	60-67	200	2
RCD168-190-200	16	67-74	200	2
RCD190-210-200	10	75-83	200	2
RCD210-230-200	10	82-97	200	2
RCD216-238-200	10	87-97	200	2
RCD238-258-200	10	102-113	200	2
RCD240-260-200	10	108-118	200	2
RCD251-271-200	10	139-150	200	2
RCD269-289-200	10	159-170	200	2
RCD314-335-200	10	168-180	200	2
RCD334-356-200	10	168-180	200	2

RUA 'Fast Fix' Stainless Steel Snap Clamps

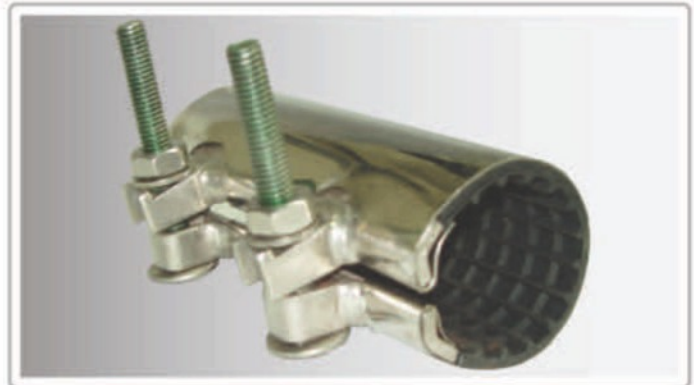


General Information

Suitable for pipe materials:	Ductile Iron, Cast Iron, Steel, Copper, PVC
Clamp Use:	Fast and permanent repair of damaged pipes above ground for damage including pin holes, frost damage, longitudinal cracks.
Sizes (diameter):	19mm—73mm
Working Range:	2-5mm depending on size
Available Lengths:	75mm
Working Pressure :	16 bar
Materials:	304 stainless Steel, grade 316 available on request EPDM gasket
Tightening Torque:	5-9 kg/m depending on size
Studs:	Studs grade 304 stainless steel M10 and are coated with either a special wax coating or PTFE Teflon so as to prevent galling during nut tightening.

All metal parts , after welding, are subjected to a pickling and passivation process for restoring corrosion resistance

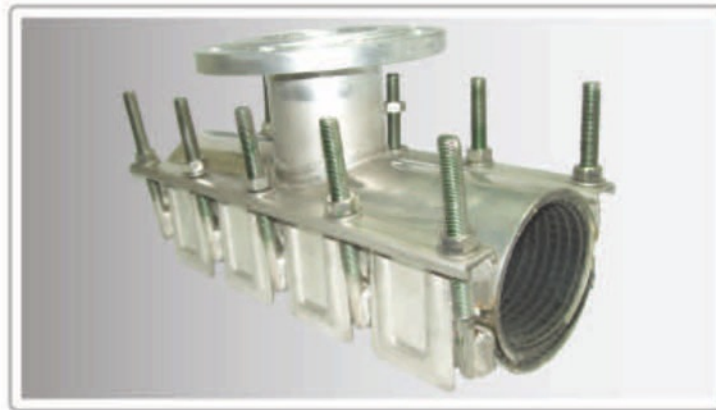
RUA 'Fast Fix' Stainless Steel Snap Clamps



RUA 'FAST FIX' STAINLESS STEEL SNAP CLAMPS

CODE	WORKING PRESSURE (bar)	RANGE (mm)	LENGTH (mm)	NO. OF BANDS
RCF026-030-75	16	26-30	75	1
RCF033-037-75	16	33-37	75	1
RCF042-045-75	16	42-45	75	1
RCF048-051-75	16	48-51	75	1
RCF050-054-75	16	50-54	75	1
RCF060-064-75	16	60-64	75	1
RCF069-073-75	16	69-73	75	1

RUA 'Hot Tap' Stainless Steel Underpressure Tapping Tee



General Information

Suitable for pipe materials:	Ductile Iron, Cast Iron, Steel, AC, PVC, PE, GRP
Clamp Use:	Permanent hot tap (underpressure drilling) on pipes with perfect circumferential sealing
Sizes (diameter):	95mm—335mm
Working Range:	20mm
Available Lengths:	400mm, 450mm, 500mm, 550mm, 600mm
Working Pressure :	16 bar
Materials:	304 stainless Steel, grade 316 available on request EPDM waffle gasket
Tightening Torque:	9 kg/m
Studs:	Studs grade 304 stainless steel M14 and are coated with either a special wax coating or PTFE Teflon so as to prevent galling during nut tightening.

All metal parts , after welding, are subjected to a pickling and passivation process for restoring corrosion resistance