



## FITTINGS FOR PVC PIPES

### SPECIFICATIONS

**MATERIAL:**

**FITTING:** Ductile iron grade 500-7/ 450-12 in accordance with ISO 1083.

**GASKET:** Rubber E.P.D.M. in accordance with EN 681.1

**WORKING PRESSURE:**

16 Bar or 250 PSI

**FLUID TEMPERATURE:**

0°C-50°C, excluding frost.

**COATING:**

**Externall coatings:** Zinc coating +bitumen painting  
Epoxy applied by FBE;  
According to customers' requirements.

**Internall coatings:** Cement mortar lining;  
Epoxy applied by FBE;  
According to customers' requirements.

**REFERENCE RULES:**

Dimensions and testing in accordance with ISO 2531/EN 545.

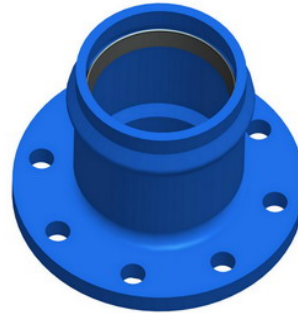
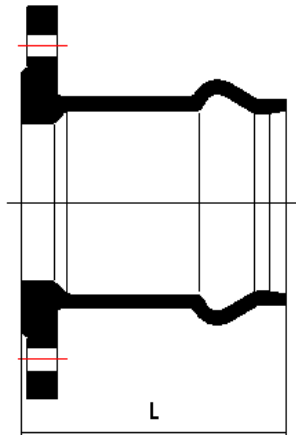
**USE:**

Used for jointing the PVC pipes, assembly by pushing the spigot through the gasket in the socket



## Flanged Socket

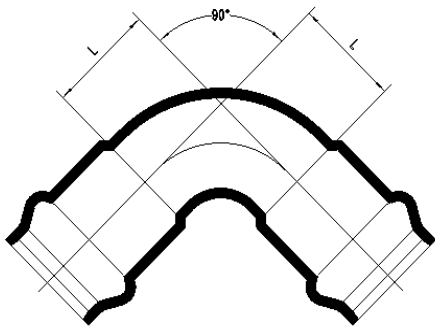
PVC



DN	OD	L	Mass (kg)
			PN16
50	63	100	3.60
60	75	100	4.10
65	75	100	4.40
80	90	120	5.40
100	110	130	6.80
125	125	140	8.30
125	140	145	8.90
150	160	155	11.20
200	200	195	16.80
200	225	195	18.30
250	250	210	25.50
300	315	240	33.50



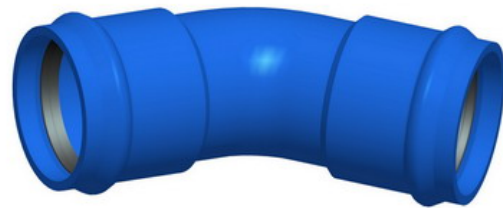
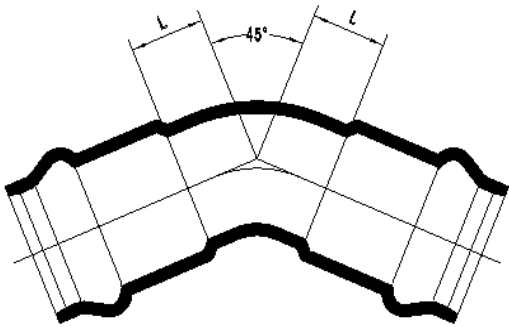
## Double Sockets 90° Bend



OD	L	Mass (kg)
63	70	3.50
75	80	5.30
90	100	7.20
110	120	10.50
125	145	13.20
160	170	19.80
200	220	32.00
225	220	36.30
250	270	49.00
315	320	77.00



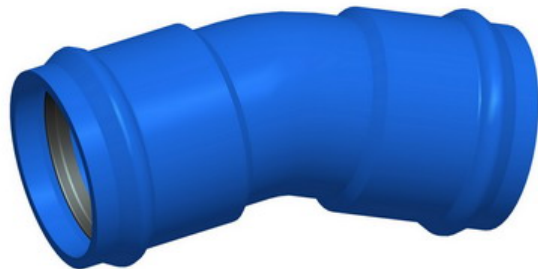
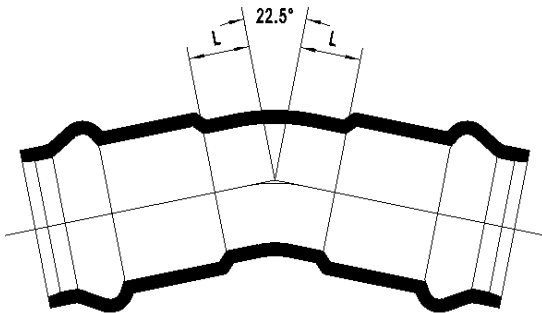
## Double Sockets 45° Bend



OD	L	Mass (kg)
63	40	3.00
75	45	4.40
90	55	6.00
110	65	8.80
125	75	11.00
160	85	16.00
200	110	25.30
225	110	29.20
250	130	37.40
315	150	59.40



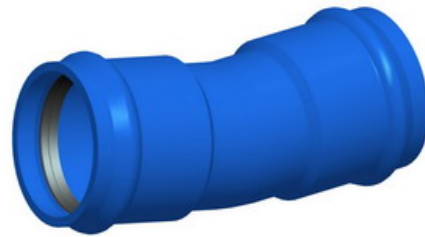
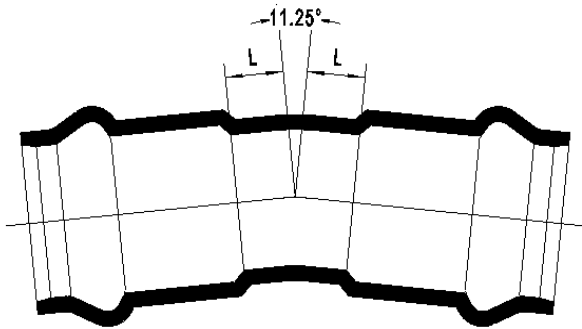
## Double Sockets 22.5° Bend



OD	L	Mass (kg)
63	30	2.80
75	35	4.00
90	40	5.50
110	40	8.30
125	50	9.60
160	55	14.30
200	65	22.00
225	65	24.80
250	75	31.40
315	85	49.30



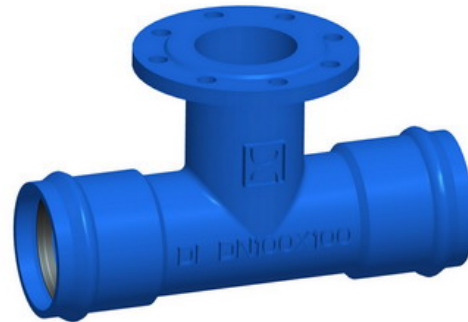
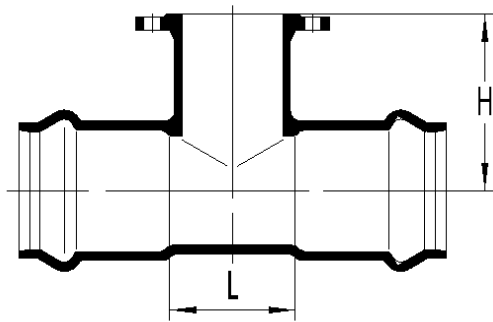
## Double Sockets 11.25° Bend



OD	L	Mass (kg)
63	25	2.60
75	25	3.90
90	30	5.30
110	30	7.70
125	35	9.00
160	35	13.20
200	40	19.80
225	40	23.00
250	50	28.60
315	55	45.00



## Double Sockets Tee with Flanged branch



OD	dn	L	H	Mass (kg)
75	60	155	150	9.1
90	60	155	155	10.4
90	80	175	165	11.9
110	60	155	165	13
110	80	165	170	14.3
110	100	195	180	16.1
125	50	155	170	13.4
125	60	155	180	13.9
125	80	175	185	15.6
125	100	195	195	17.2
125	125	225	200	19.5
160	60	160	190	18.1
160	80	180	200	20
160	100	200	210	21.7
160	125	230	215	23.9
160	150	260	220	28.4
200	60	165	215	25
200	80	180	225	26.8
200	100	200	230	28.5
200	125	235	240	31.2
200	150	260	245	35.2
200	200	320	260	41.2



## Double Sockets Tee with Flanged branch - Con't

OD	dn	L	H	Mass (kg)
225	60	165	215	27.9
225	80	180	225	29.6
225	100	200	230	31.6
225	125	235	230	34.6
225	150	260	245	38.1
225	200	320	260	46.5
250	60	165	260	33.3
250	80	185	265	35.6
250	100	205	270	37.7
250	125	240	275	40.7
250	150	265	280	44.8
250	200	320	290	53.1
250	250	380	300	61.5
315	60	165	290	47.9
315	80	185	295	50.4
315	100	210	300	53.1
315	125	240	305	57
315	150	265	310	60.8
315	200	325	320	70
315	250	380	330	80.2
315	300	440	340	97.5



## Flanged Socket Duckfoot Bend

DN	OD	L	H	Mass (kg)	pattern
110×80×90°	180	180	120	15	y

