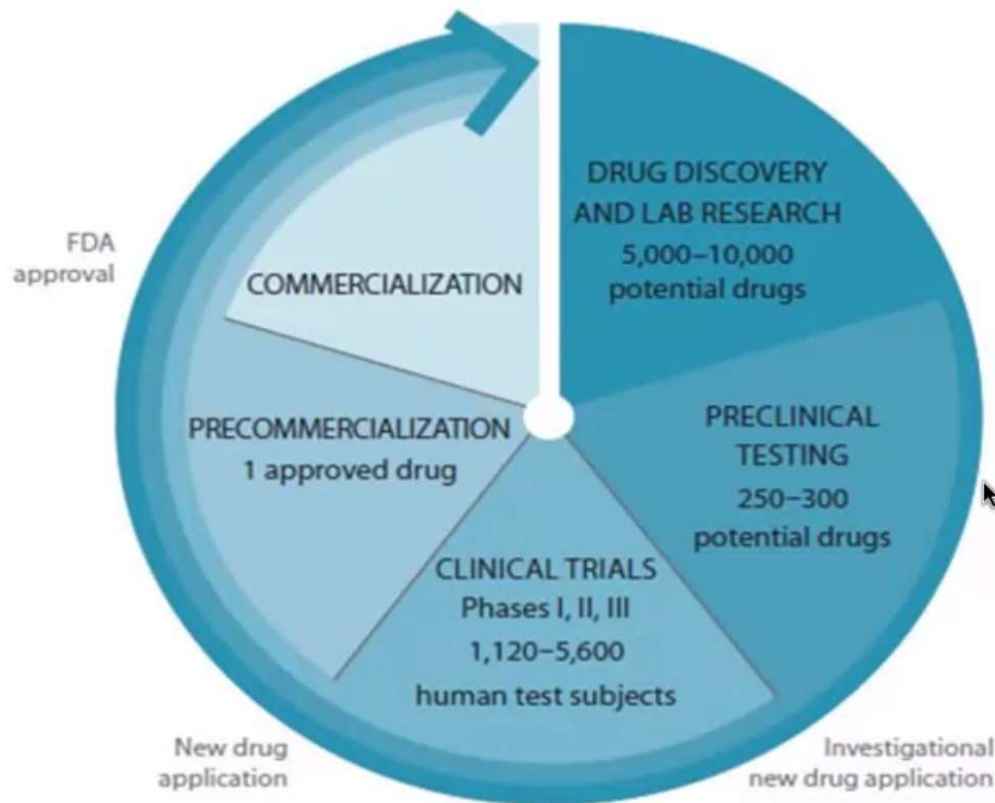


sapiently

Challenge/
unmet need

NEW DRUG DEVELOPMENT PROCESS



Source: Venture Pharmaceuticals Ltd.

70% of potential participants > 2 hrs away from the closest clinical trial site/ study center

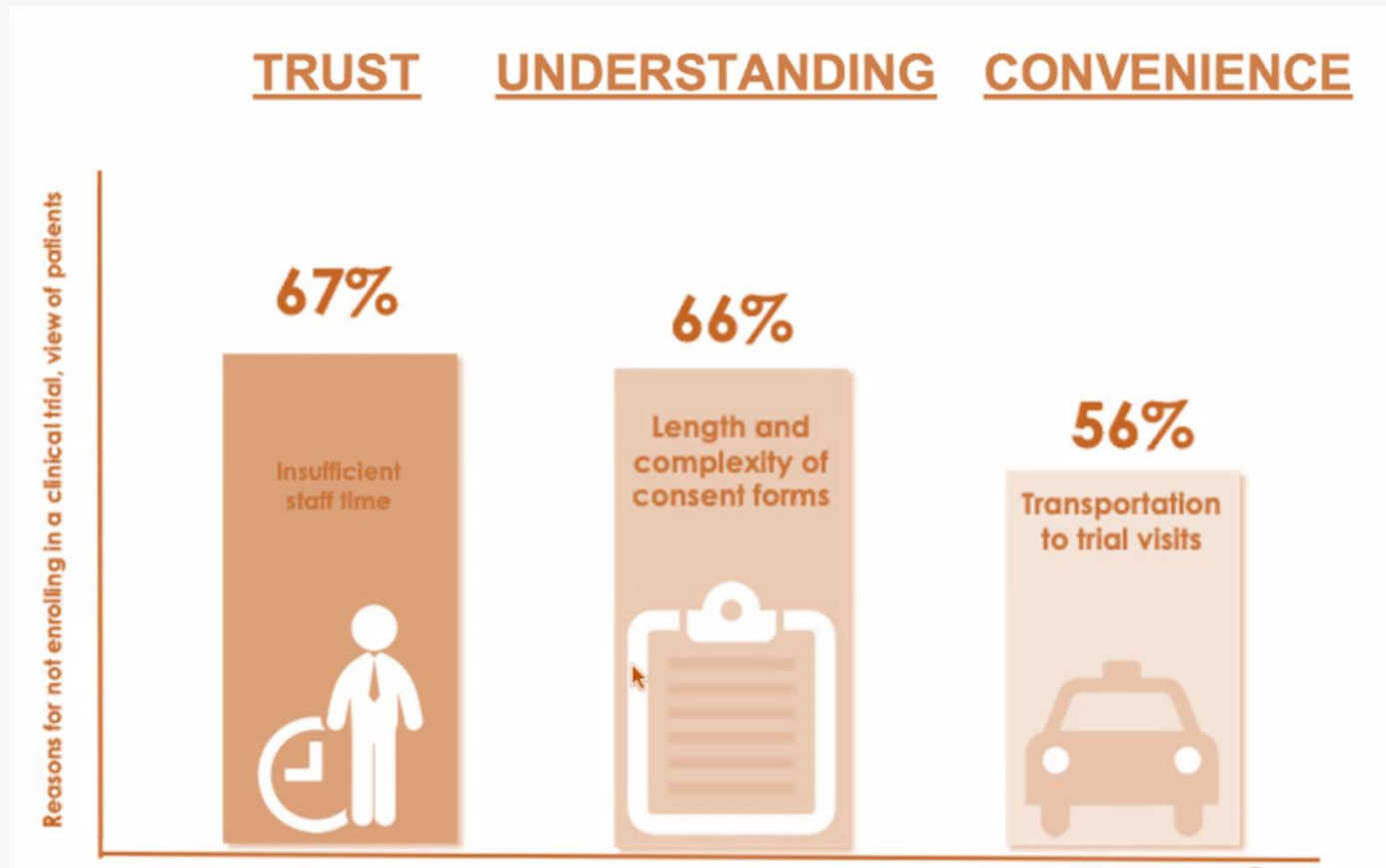
67% of sites fail to meet enrolment goals

30% average drop out rate



85% of clinical trials fail to retain enough patients

Why don't patients enrol in trials?



AI as a solution in clinical trial analysis

Top-three digital challenges sponsors identified

1. Digital technology and AI to improve clinical trial efficiency
2. Analyze complex data sets
3. Integrate data from disparate sources



1 ICON Digital Disruption in Biopharma White Paper.

80% of the 350 respondents in biopharma report that they plan to use AI or big data analytics within 5 years

55% of respondents said they were partnering with tech companies to help expand data gathering / processing capacity

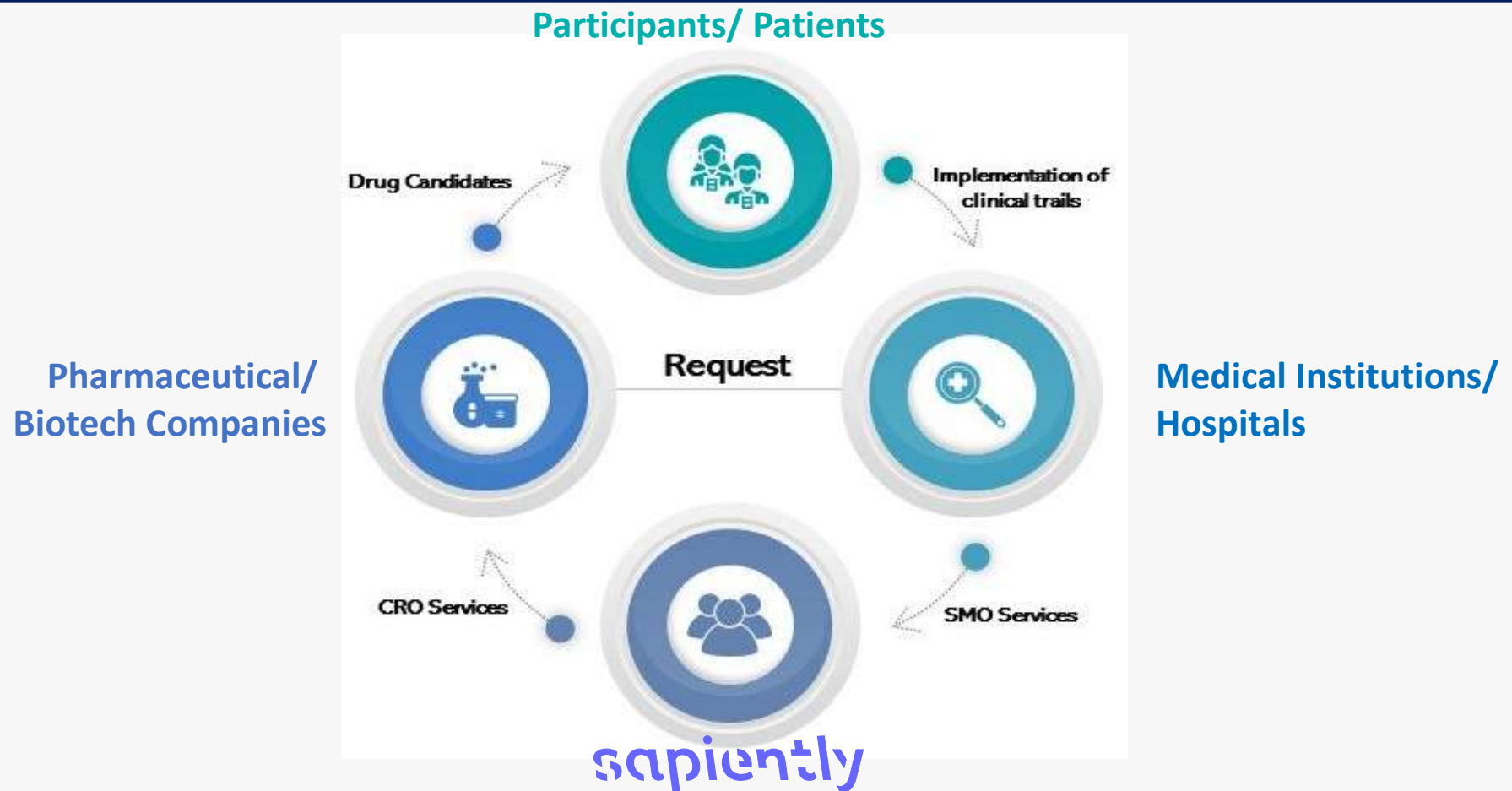
Organisation & Target Audience

Organisation/ Who we are

- SAPIENTLY is an early-stage start-up seeking to **build an ecosystem/ strategic partner alliances** or consortium of committed and active collaborators to guide important components of the clinical trial
 - The Science around new medical treatments is rapidly progressing, but there are many questions surrounding **how Science could Translate into a Therapy**.
 - Success lies in moving from an idea generating phase at a 50.000-foot level to the on-the ground implementation phase. It is crucial to strike a balance between what is **scientifically valuable and operationally feasible**
 - We have no time or money to spend on wasted efforts. We really need to focus on tasks where we/ patients could gain something. We have to figure out how we can best use science at our disposal to avoid type 1 error but also **get superior treatments to patients**.

...therefore, we strive to work sapiently (for sapiens)

Target Audience



Target Audience: Decision Makers

Based at the pharma companies; highly complex (one DMU for each drug);

Economic buyer	Influencers	Champion	Veto
Global Program Leader	-Clinical Operations Leader -Head Development Operations	-Medical Director -R&D Innovation/Digital Heads	Chief Financial Officer

Brand personality

sapien

The word Sapien derives (or comes) from an old latin word meaning 'Wise'. The word 'Sapien' is most commonly recognized when used in conjunction with the word 'Homo' (an ancient greek word meaning 'same, or man').

sapiens

of, relating to, or resembling modern humans (*Homo sapiens*)

sapience

great wisdom or sound judgment
the capacity to be self-aware

sapient

having or showing great wisdom or sound judgment.

having or showing self-awareness

sapiential

containing, exhibiting, or affording wisdom; characterized by wisdom

Sapiently

sapiently

Having great wisdom and discernment.

astutely, sagaciously, shrewdly, acutely

We strive to work sapiently (for sapiens)

Different questions

01

**PATIENT CENTRIC/
THINK DISEASE**

When you think about a patient rather than a drug, there are obviously many questions related to drugs, biomarkers, combinations, etc. to be answered.

More Answers

02

**NEW TRIAL DESIGN/
MORE ANSWERS**

Ask and answer many questions about disease and disease population

***Not seeking answers to outdated questions**

Faster & Better Insights

03

**DATA/ ARTIFICIAL
INTELLIGENCE (AI)**

Ability to quickly gather and use meaningful information

Stronger Impact

04

**SAVING LIVES/
MAKING IMPACT**

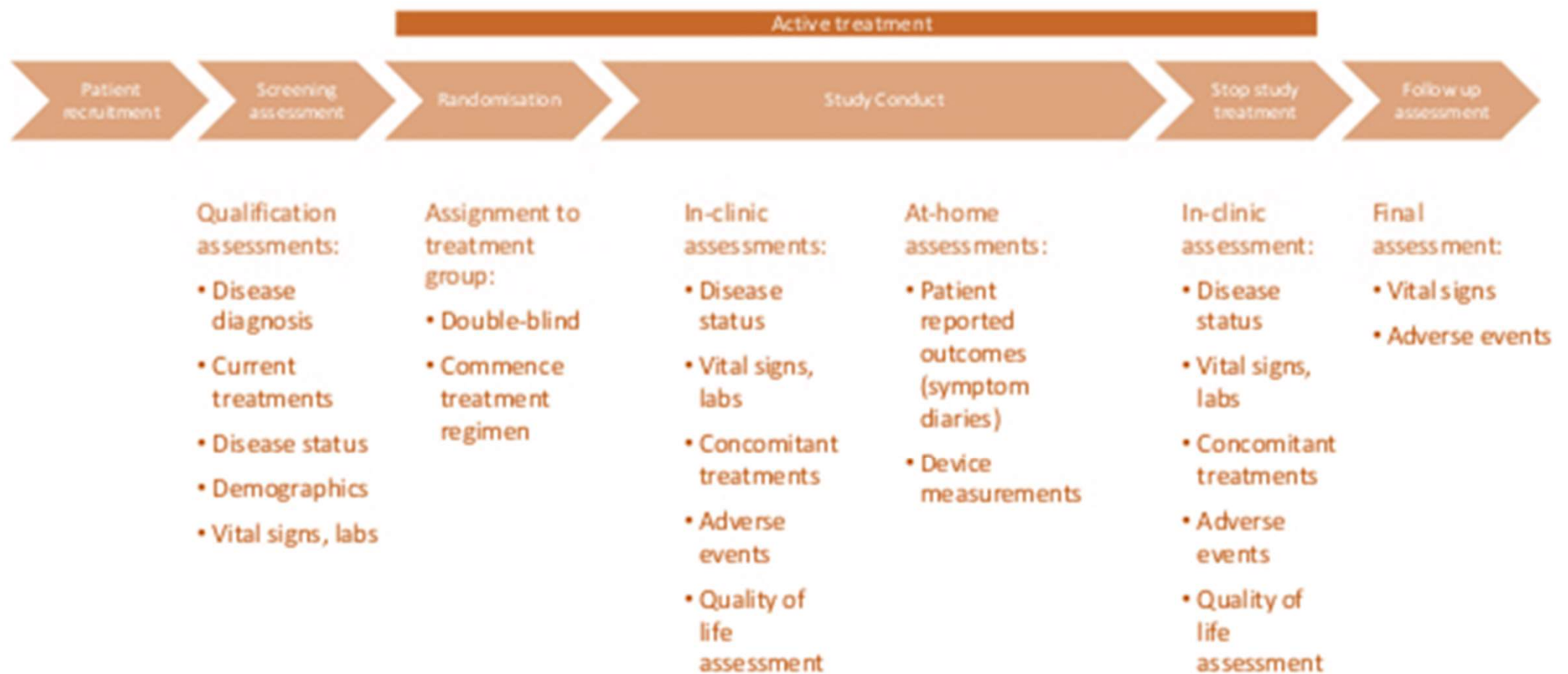
Avoid False neutrals – therapies that have not been and may never be evaluated in clinical trials

sapiently

Thank you!

BACK-UPS

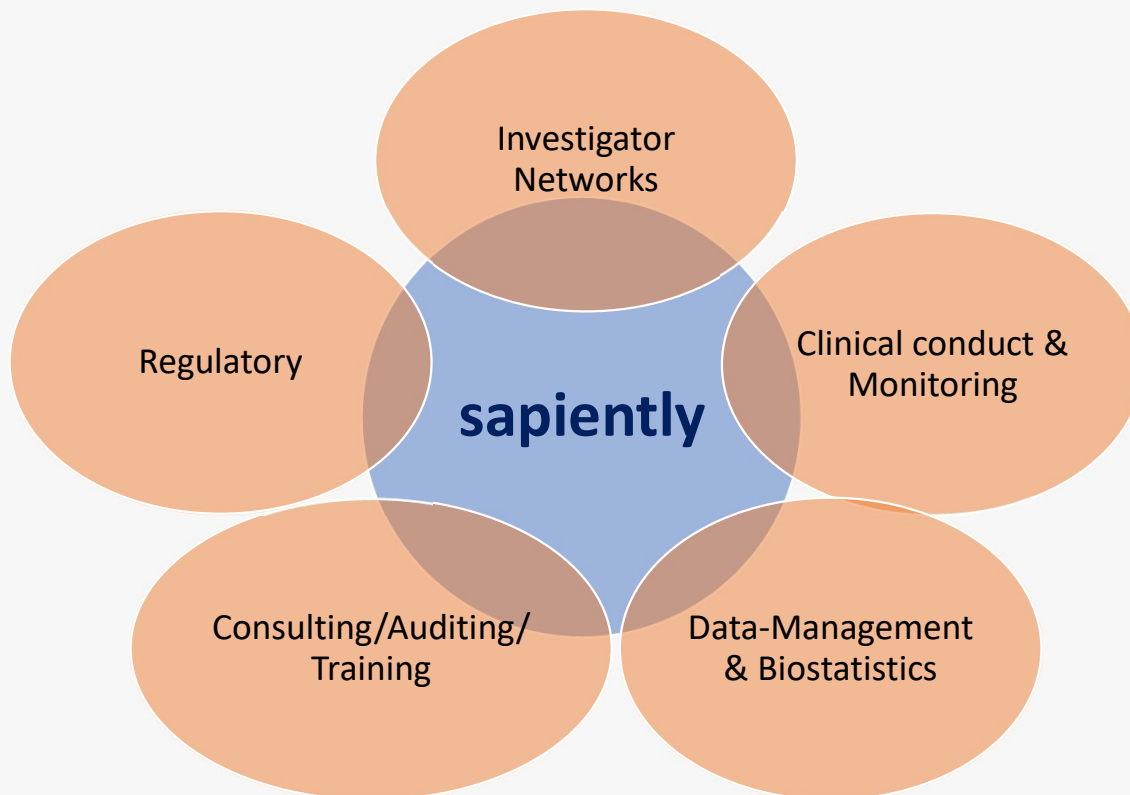
A typical clinical trial process



market/ competition

Competition: TOP 10 Clinical Research Organizations (CROs)

CORE ACTIVITIES



	01	Laboratory Corporation of America Holdings (Covance)
	02	Quintiles IMS Holdings, Inc
	03	Syneos Health
	04	Paraxel International Corporation
	05	PRA Health Sciences
	06	Pharmaceutical Product Development (PPD)
	07	Charles River Laboratories International Inc (CRL)
	08	ICON Public Limited Corporation
	09	Wuxi Apptec
	10	Medpace Holdings, Inc

Competition Logos: Clinical Research Organizations (CROs)



LOGOS FROM OTHER COMPANIES WITH SIMILAR NAMES