

## Company Profile

Phone: +966 12 6929022

Fax: +966 12 6929279

P.O.Box.8858Jeddah21492 K.S.A

[www.pcc-ksa.com](http://www.pcc-ksa.com)





## Introduction

PCC (Previously Al-Hefnah) was established in the year 1980 as a sub-contractor Specialized in waterproofing and specialized finishing, with the main target of furnishing the Saudi market by a professional team of engineers and applicators to abide by the need of the fast-growing construction world in the Kingdom.

In 2005, since the company's humble beginning commitment to deliver the highest quality work on schedule and within budget. In meeting these objectives, we consistently started emphasizing on health, safety and environment.

Our goals were reached in a short time of 1 year where the company succeeded to add multiple scopes, and win the contracts of some very sophisticated and prestigious work in the field of dry wall partition and ceiling installation, concrete repair, light foam concrete, expansion joint and finishing activities.

Nevertheless, our team is permanently participating to seminars and training sessions for self development and update with the latest technologies and inventions in the world.

## Future of PCC

### Mission

Our Mission is to offer excellent service in each of our professional disciplines, in accordance with project, rules, practices, codes of conduct and integrity, thereby developing our team and providing a leading platform from which to service the built environment and, our valued Clients.

Our appreciation to our clients' interests evidenced by meeting their requirements and ensuring high quality work. Is the prime directive of our management. Our growth and profitability are maintained through innovation, technical enhancement and adaptability to all our clients.

### Vision

Our vision is to grow our multi-disciplinary team in order to offer a broad spectrum of specialist Managers, Engineers, Foremen and Specialized Labor to become our Clients' preferred Professional Service Provider choice through excellence and efficiency in all aspects of the project life cycle. Whether it is a Mega Project, building project, infrastructure project...





## Contact Us

Trading name	PLATINUM CONSTRUCTION COMPANY
Address	Jeddah - Amir Sultan road - Al Khaldiah
Telephone number	00 966 (12) 6929022
P.O Box	8858 Jeddah 21492 KSA
Chairman	H.H Prince Fahed Bin Mohammad Al Saud H.H Prince Saud Bin Mohammad Al Saud
Managing director	Dr. Walid Mohammad Doughan 00 966 (5) 05647339
Project director	Eng. Mohammad Walid Doughan 00 966 (5) 67777534
Email	Info@pcc-ksa.com

## Meet the Team

H.H Prince Fahed Bin Mohammad Al Saud	Chairman	Abed Alrahman Eido	Sales Manager
Dr. Walid Doughan	Managing Director	Mohammad Ali Ghrayeb	Procurement Manager
Abed Oneissy	Business Developer	Nibras Droubi	Legal Advisor
Jean-Claude El Hawa	Finance Manager	Abdul Razzak Al Dali	Public Relations Manager
Sameh Al Jibal	Construction Manager		
Rabih Younes	Construction Manager		
Al Moutaz Billah Eido	Technical Manager		



## Specialized Activities

- 1- Waterproofing activities including (All kind of waterproofing such as Bituminous, Elastic Membrane, Liquid Applied and Sprayed waterproofing)
- 2- Expansion Joint (Supply & Apply)
  - a. Construction Joints
  - b. Control Joints
- 3- Dry wall and ceiling (Supply and Apply)
  - a. Specialized for specific requirements for Fire, Sound and Heights
- 4- Concrete Repair
- 5- Industrial Flooring (Epoxy, Polyurethane, etc...)
- 6- Finishing as special coating of protective paint.

## Trading Division

- 1- Power tools and accessories (FLEX, Cress, Mechanics, Metabo, Winner Flex, Larius)
- 2- Expansion and Control Joint (GV2, Veda France, WABO)
- 3- Distributors for BASF, Sika, Fosroc, Al Jazeera, Ritver. Etc.
- 4- Drywall Systems (KNAUF, VIDI Wall, Aqua panel)
- 5- Safety tools and Equipment's
- 6- Office Furniture

# List of Major Accomplished Projects

PCC has a combined professional experience among its Principals and Members. Listed below are the projects that the firm has undertaken:

Client	Project	Description	Amount - SAR
EL SEIF	Badiaa Island	WP and Finishing	500,000
EL SEIF	MOI – HQ	WP and Finishing	600000
EL SAMI	Jamjoom Residential	Finishing, Stamp Concrete & WP	2,650,000
EL SAMI	Jamjoom Residential Center	Roof WP	250,000
EL SAMI	Prince Satam Palace	Concrete Repair & WP	750,000
FAST	HHR	Epoxy WP for Water Tank	14,000,000
INFO	Residential Complex	Finishing & WP	4,300,000
FAST	HHR	WP under Granite	9,500,000
FAST	Ring Road - Makkah	WP	800,000
FAST	Holy Mosque	Concrete Repair	8,200,000
SBG	DOKAAE	Gypsum Board Partition	180,000,000
SBG	DOKAAE	Concrete Works and Finishing	33,000,000
SBG	DOKAAE	Gypsum Board Partition	6,000,000
Sama El Ezdihar	UBT	Water Proofing	388,140
FAST	Holy Mosque Expansion	Steel Structure work	1,760,000
FAST	Holy Mosque Expansion	Hard Rock Drilling	1,200,000
FAST	Ring Road Makkah	Finishing Work	4,800,000
IHCC	Diyar El Salam	External Cladding	4,600,000
SBG	DOKAAE Tower A-B-C	Drywall Partition	180,000,000
S.A.D.S	S.A.D.S Hangar – Jeddah	Light Weight Concrete Works	2,000,000
ALAS GROUP	Alas Group Office Building	Concrete Works	8,400,000
Mr. NASSER AL SHAHRANI	Palace Project	Concrete Works	5,500,000
INFO	Ghandour Chocolate Factory	Floor Epoxy Paint & Gypsum Board	7,300,000
EL SAMI	Jizan Port	Gypsum Cladding & Epoxy Work	6,700,000
IHCC	Diyar El Salam	Tiling (Ceramic and Marble) Works	800,000
EL SEIF	MOI – HQ	Marble Works	700,000
EL SEIF	MOI – HQ	Interior Paint	560,000
EL SEIF	MOI – HQ	Exterior Paints	510,000
IHCC	Diyar El Salam	Interior Fitouts (WC, Basins, accessories)	650,000
FAST	Ring Road - Makkah	Concrete Repair	2,400,000
FAST	HHR	Expansion Joints & Fire Partition	6,500,000
AL FAROOQ	Show Rooms (Faces, Lacoste, Geox, Marlboro)	Turn Key	28,750,000
MDC EXEL	Dammam warehouse (Al Olayan)	Concrete Works	29,500,000
MDC EXEL	Al Olayan Hangars (Jeddah,yanbu,Riyadh)	Concrete Works	11,650,000
BAGABAS BROTHERS	Housing Compound	Concrete Works	13,510,000
HIND AL SULAIMAN	4 Private Villas (Mhawesh)	Concrete Works	7,600,000
SH. OMAR AL AMOUDY	Almuwakaba Factory project	Concrete Works	7,300,000
UDC	The Pearl Doha	Concrete Works	220,750
FAST	Shamiah - Makkah	WP, Epoxy and Finishing	38,000,000
FAST	HHR	Epoxy Screed	13,500,000
SBG	HHR	Drilling for Rebars	540,000
King Fahed Causeway Authority	King Fahd Bridge	Increase Tolls and Finishing Saudi Side	6,700,000



**BANKERS :** Saudi American Bank - Riyadh  
Saudi British Bank - Riyadh  
AIBank AISaudi AIFarni - Riyadh



# Certificates

## CERTIFICATE



Management System as per  
EN ISO 9001 : 2008

In accordance with TÜV AUSTRIA procedures, it is hereby certified that



**PLATINUM CONSTRUCTION COMPANY**  
21471 Jeddah  
KINGDOM OF SAUDI ARABIA

Applies a Quality Management System in line with the above Standard for the following Scope

**PROVIDING CONTRACTING & FINISHING SERVICES (WATER PROOFING, CLADDING, CONCRETE REPAIR).**

Certificate Registration No.: 0518100065872

Valid until: 2018-09-14\*

*Haralabos Ageloudis*

Haralabos Ageloudis  
Head of Management Systems & Products Certification Division

Certification Body  
at TÜV AUSTRIA

Athens, 2017-08-31

This certification was conducted in accordance with TÜV AUSTRIA auditing and certification procedures and is subject to regular surveillance audits.

\* The validity of the present certificate is renewed provided that the audit, according to the Standard EN ISO 9001:2015, has a positive result, according to the Regulation of TÜV Austria Hellas.

TÜV AUSTRIA HELLAS  
429, Mesogelon Ave.  
GR-153 43 Athens, Greece  
[www.tuvaustriahellas.gr](http://www.tuvaustriahellas.gr)



CePRG156\_A7e

Headquarters in Athens bear the responsibility of the Certification decision





# Documents

[illegible]

**شهادة اشتراك**

**الهيئة العامة للغرفة التجارية والصناعية بـجدة**  
 GENERAL CHAMBER OF COMMERCE & INDUSTRY

قطاع خدمات الاشتراكات والتصدير  
 إدارة الاشتراكات والتصدير

رقم الاشتراك : ١٨٨٢٨  
 تاريخ الإصدار : ١٤٣٧/٠٩/٠١ هـ  
 المدة : ثلاثة  
 تاريخ الانتهاء : ١٤٤٠/٠٩/٢٠ هـ

**شركة تجارية مسجلة**  
 ذات مسؤولية محدودة

رقم السجل التجاري / الترخيص : ٤٠٢٠٢٨٧٤٤  
 التاريخ : ١٤٣٩/٠٩/٢٠ هـ  
 مسجل الدولة كعاد : ١٤٣٧ هـ

مدير قطاع خدمات الاشتراكات والتصدير  
 محمد بن أحمد العباسي

يذكر معالي هذه الشهادة بصدور هذه الشهادة في تاريخ أو تعديل هذه الشهادة لتغير الأسماء والتغيير في مكان مكتب السجل التجاري المذكور في هذه الشهادة.







رقم الشهادة : ٠٢٠٣٧٧٧٧٧  
 التاريخ : ١٤٣٨/١٢/١٧ هـ  
 الرقم المميز : ٢٠١١٧٧٧٧٧

فرع جدة

**الشهادة**

CERTIFICATE

الهيئة العامة للزكاة والدخل  
 GENERAL AUTHORITY OF ZAKAT & TAX  
 (GATZ)

تشهد الهيئة العامة للزكاة والدخل بأن الملتصق / الشركة البلاتينية للمطاولات

شركة رقم ٧٠٠١٧٨٩٩١٣ وسجل تجاري رقم ٢٠٢٠٢٧٧٧٧

قدم بإقراره من الفترة المنتهية بـ ٢٠١٧/١٢/٣١ م

وأن جميع هذه الشهادة للملكية من إزاء جميع معاملاته بما في ذلك صرف مستحقاته النهائية عن العهود.

يسري مفعول هذه الشهادة حتى تاريخ ١٤٤٠/٠٨/٢٥ هـ الموافق ٢٠١٩/٠٩/٣٠ م.

(العالمس والعشرون من شعبان ألف وأربعمائة وأربعون هجري)

التوقيع ( ١ ) في النموذج المرفق

الهيئة العامة  
للزكاة والدخل  
GENERAL AUTHORITY  
OF ZAKAT & TAX  
الشهادات

الختم الرسمي

هذه الوثيقة مستخرجة من النظام الآلي ولا تحتاج إلى توقيع

لا يحدد بهذه الشهادة إلا بعد التحقق من موقع الهيئة [www.gatz.gov.sa](http://www.gatz.gov.sa)

[illegible]

**SABB**  **ساب**

تاريخ: 15 رمضان 1434 هـ  
مواصلة: 23/يونيو/2013 م  
رقبنا: WFMIBU03650056  
مناك: وزارة التجارة

سلام عليكم ورحمة الله وبركاته....

هذا يؤكد أن السادة / الشركة اليابانية للمقاولات قد أودعت مبلغ 100,000,00 ريال سعودي (مائة ألف ريال سعودي لا  
أبر) بمصاهير رقم 036-500056-001 بتاريخ 23/7/2013 م وذلك بمثل راس من الشركة حسب عقد التأسيس ويؤكد البنك  
عدم السماح بمصارف من المبلغ المذكور، إلى أن تنتهي إجراءات صدور السجل التجاري.

  
المعالي  
Your Faithfully,  
رئيس البنك السعودي العربي  
For The Saudi British Bank  
علي علي بن سمام  
Hani A. Bukhamath  
مدير الأعمال المصرفية - المنطقة الغربية  
Business Banking Manager-Western Province

**The Saudi British Bank**  
Area Management Office  
P.O. Box 198, Jeddah 21411, Kingdom of Saudi Arabia  
Tel: +9662 605 1980  
Fax: +9662 605 1980  
www.sabb.com

**البنك السعودي البريطاني**  
إدارة المنطقة الغربية  
P.O. Box 198, جدة 21411، المملكة العربية السعودية  
هاتف: +9662 605 1980  
فاكس: +9662 605 1980  
www.sabb.com

© Saudi British Bank Company Ltd. All Rights Reserved 2013. All Rights Reserved. Saudi Arabia

[illegible]



# Civil Works

Platinum Construction Company (PCC) undertakes a range of civil works projects and takes pride in the safe, timely and cost effective delivery of civil construction projects in the Resources, Construction, Infrastructure, Utilities and Local Government sectors. Our highly skilled work crews work in conjunction with the client, offering integrated solutions to ensure the project scope is delivered safely, on time and within budget.

## General Activity

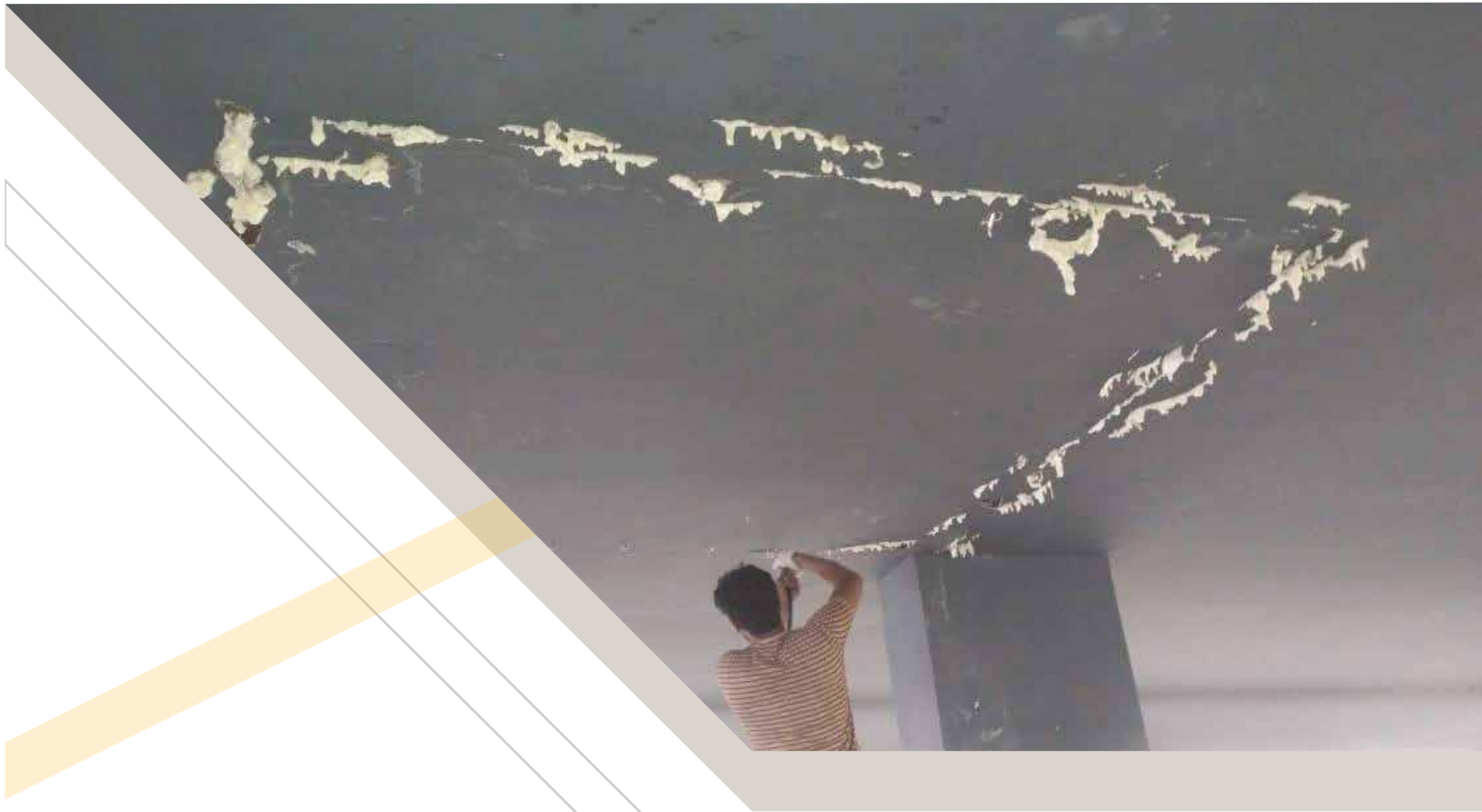
- General Contracting
  - Environmental Works
  - Marine Works
  - Landscape Works
  - Steel Works
  - Finishing Works
  - Concrete Works

## Specialized Activity

- |                        |                       |
|------------------------|-----------------------|
| -Gypsum Board Works    | -Thermal Insulation   |
| -Concrete Casting      | -Specialized Flooring |
| -Concrete Repair       | -Industrial Works     |
| -Water Proofing        | -Asphalt Works        |
| -Expansion Joints      | -Roofing Systems      |
| -Road Works            | -EIFS/DETHAR          |
| -Fire Proofing         | -Sand Proofing        |
| -Specialized Finishing | -Cladding             |
| -Security Systems      |                       |







## **Execution Pictures**







## Concrete Casting in Ministry of Interior Building

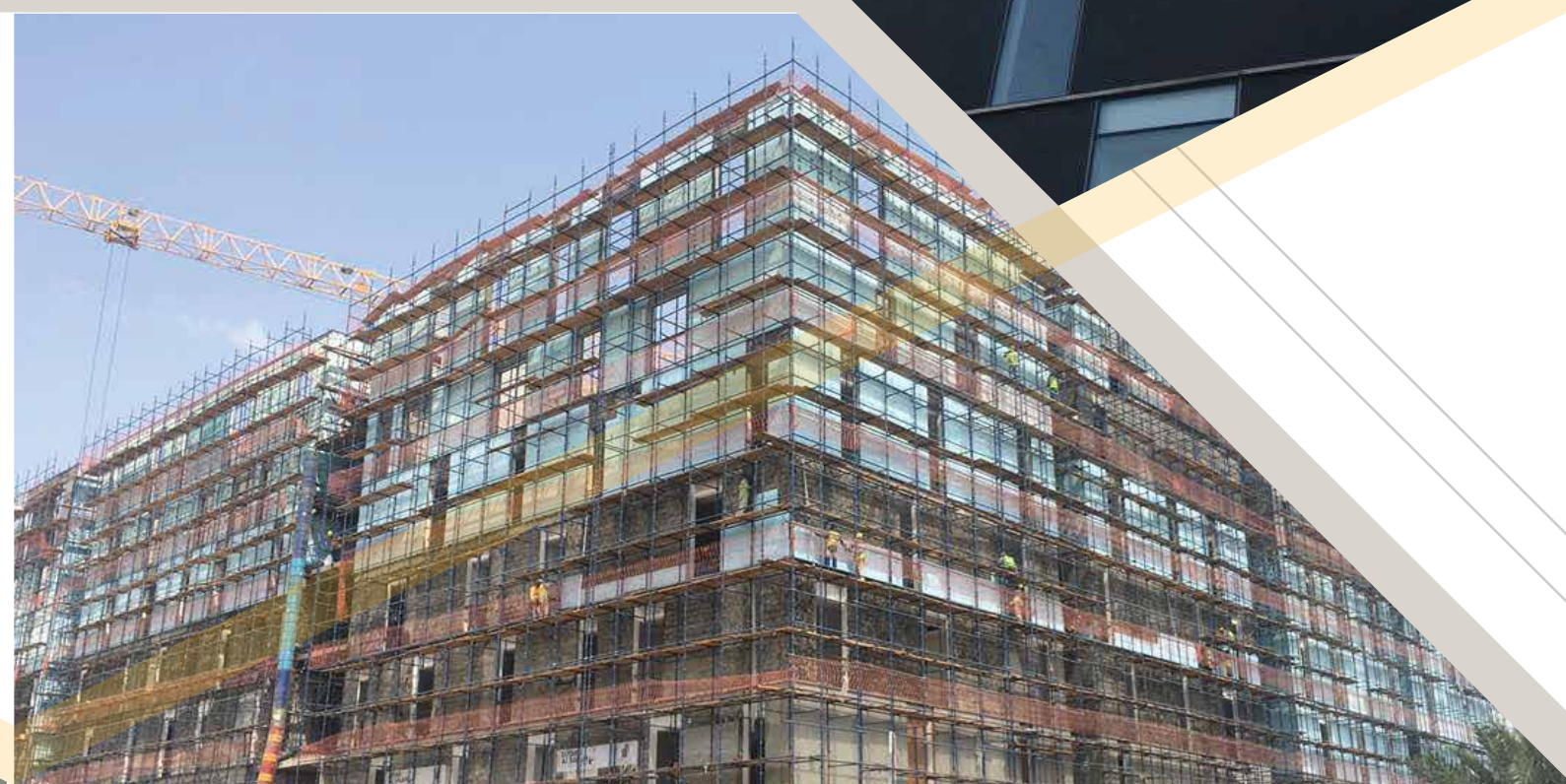




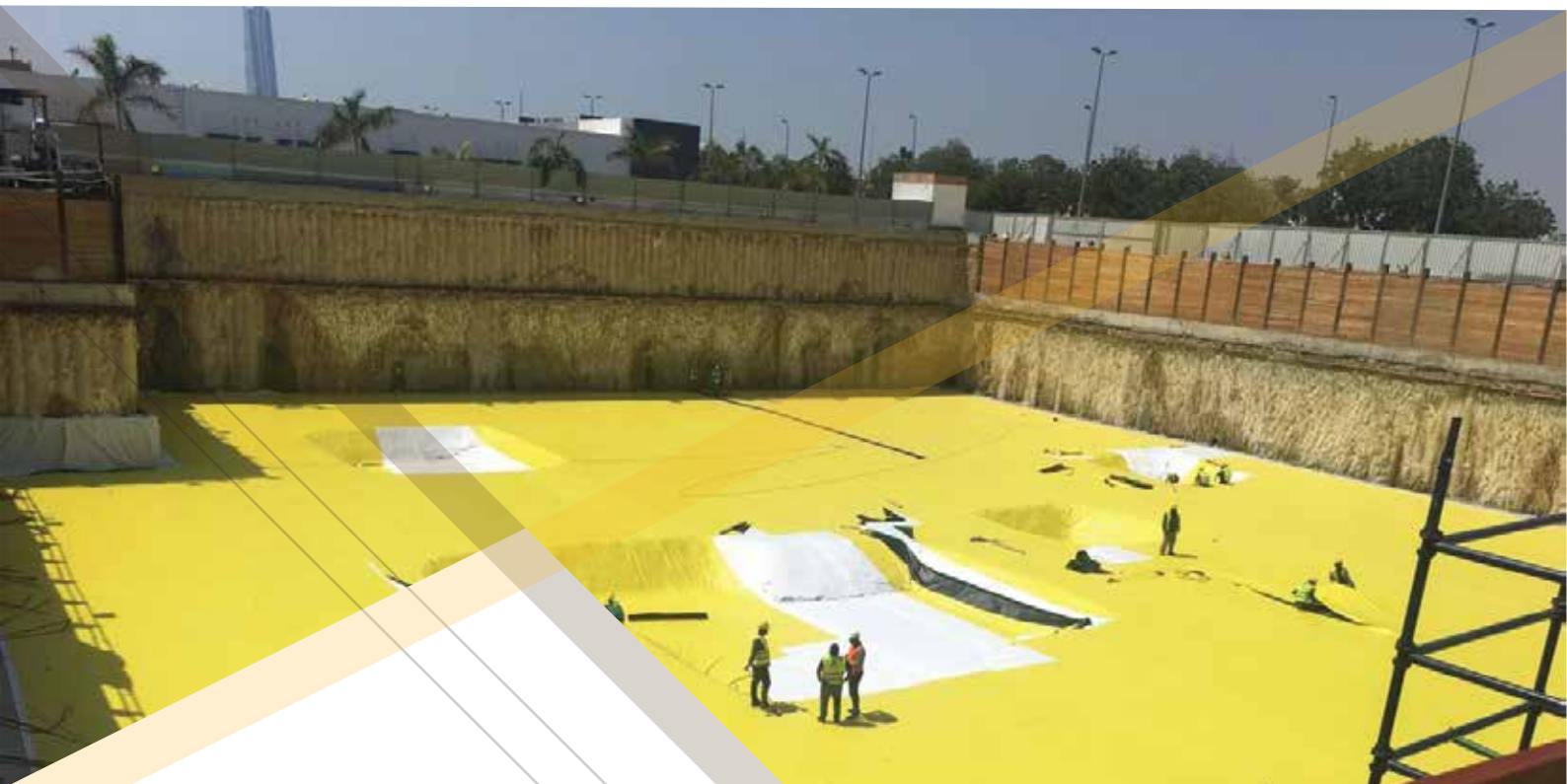
**Epoxy Screed Casting**



**EIFS Cladding System**







## PVC Waterproofing



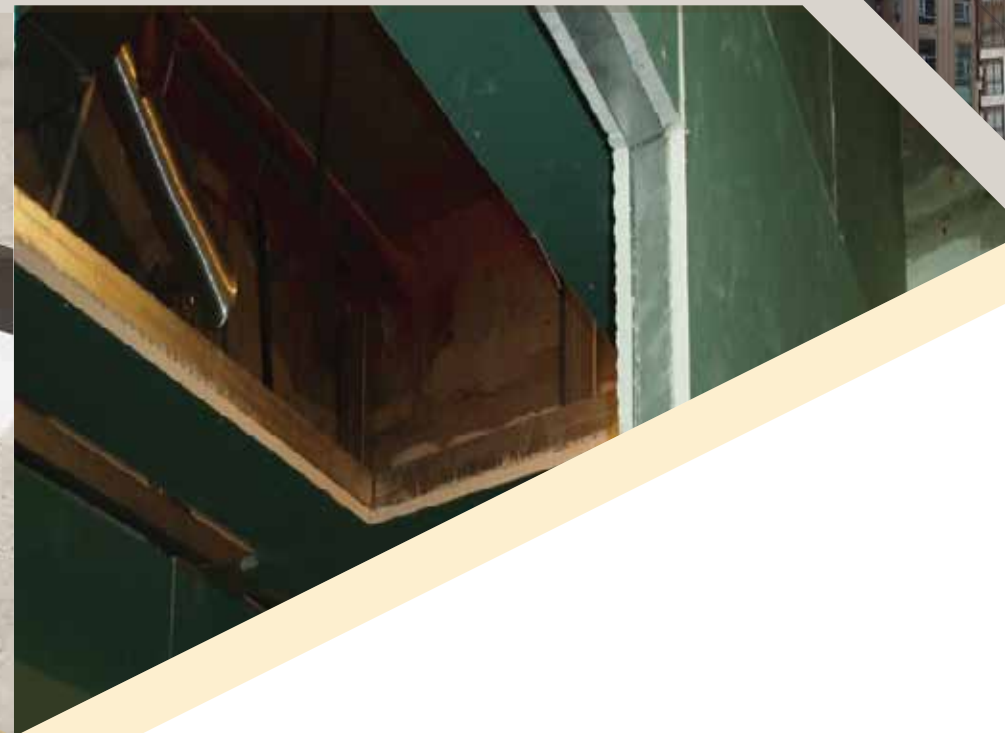




**Landscape and Tiling work**



**Development of King Abdul Aziz Towers Makkah  
(Gypsum Board Partition)**







**Gypsum Board partition and ceiling**  
**Al Sail Tower**





## Jabal Omar Development Project

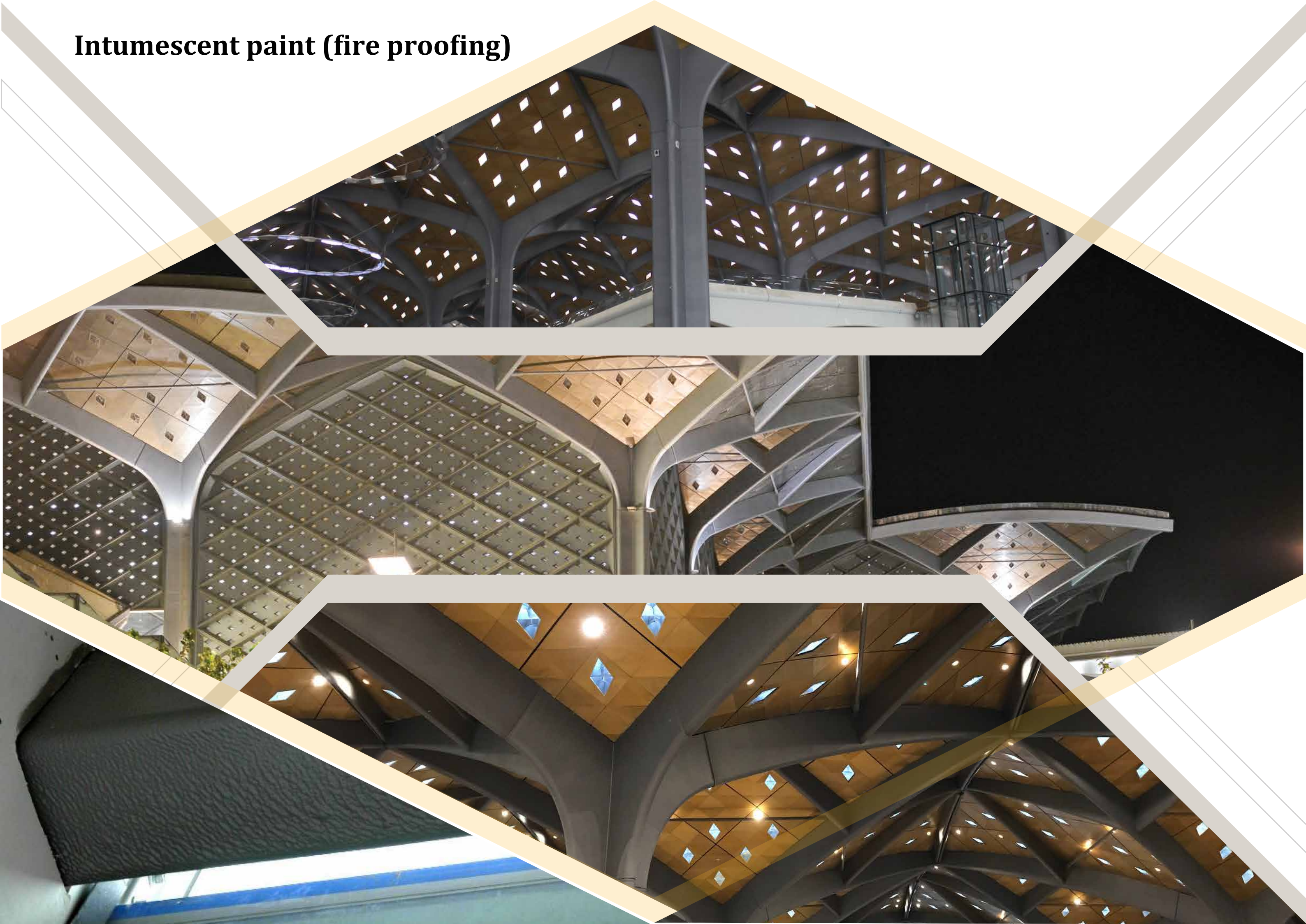


## Marble Installation

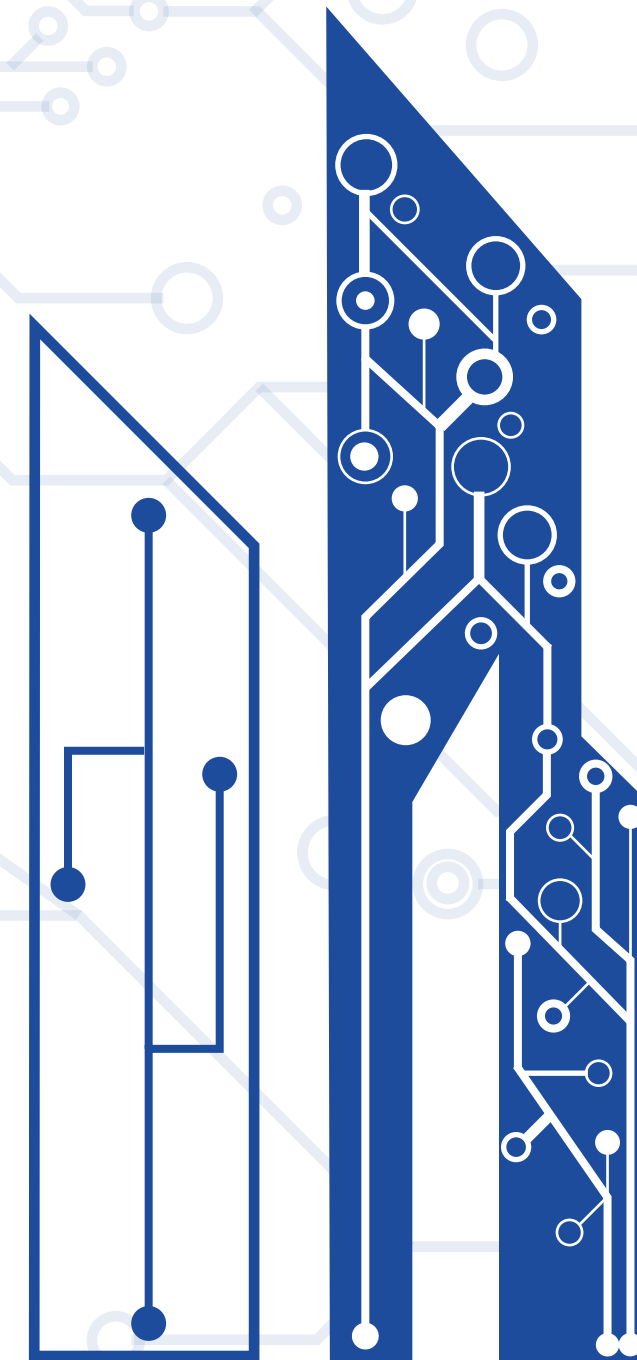




# Intumescent paint (fire proofing)







01  
1010  
1010010  
101010101  
01010110101  
01010101010101  
1010101110101000  
0101001010100101001  
01010100001001010101  
010100101010101010  
10101010001010100101  
01010100100110101010  
010101010101010110  
10101010101010101101  
01011101010000101001  
01010010100101001010  
10101001010101010100  
00100101010101010010  
101010101010101010  
00101010010101010100  
10011010101001010101  
01010101011010101010  
10101010110101011101  
01000010100101010010  
1001010010101010001  
01010101010000100101  
01010101001010101010  
10101010101000101010  
01101110000100110101  
01010010011010101001  
010101010101011010  
1010101010101010101  
01110101000010100101  
01001010010100101010  
10100101010101010000  
100101010101001010  
101010101010101000  
101010010101010010

**PLATINUM**  
**SMART SOLUTIONS**



**PSS offers turnkey solutions in the field of safety and security, which span an extensive variety of advanced systems that have direct effect on the security of a facility and its personnel, including Security of Critical Infrastructures, Identity Management and Access Control, Video Surveillance, Perimeter Intrusion and Border Security.**

## Security Access Control System

Security Access Control Systems are the selective restriction of accessing to a place. It performs person identification and authorize or deny access to the identified person through personal identification numbers (PIN), biometric scans and physical or electronic keys.

## Access Control System

Access control is provided at the places where an identification control is required. There are multiple control points such as:

- Doors; doors that gives access to a restricted area, or between two different zones with different security requirements
  - Turnstiles; that gives access to a restricted area, public or-non public
  - Parking gates
  - Elevators

## Access Control Readers

Card Readers are the devices used to grant or deny access to a facility

- Access Control Readers Can be categorized to
  - Card Reader
  - Card Reader with PIN
  - Biometric Reader
  - Long Range RFID readers (For Gates)

## Video Surveillance & Intelligent Video Analytics

Video Surveillance can be used for multiple uses like: ➤ Crime prevention ➤ Industrial processes and control of retail ➤ Traffic monitoring ➤ People traffic monitoring ➤ Transport safety

- Video surveillance system can highly decrease crimes on surveyed public areas. Monitoring private access by camera allows the security teams to have a better view of all traffic within the surveyed areas. Associated to a face recognition system, video surveillance systems can automatically detect intrusions in unauthorized and restricted areas.
- Video Management System comprises of the Video servers & software and Storage for the captured videos. VMS capability and capacity is determined by the size and requirements of the VSS
- Intelligent video analytics systems can be used with the video surveillance system. It allows monitoring a preventing crimes in crowded areas. Here are different programmed automated analyses:
  - Entry to restricted zone; an alarm is triggered once a person sized object enters a defined zone
  - Object removed or abandoned object; an alarm is triggered once an object is removed or introduced in a specified zone
  - Loitering; an alarm is triggered once a person sized object is seen moving or stationary for longer than a specified time
  - People tracking; an alarm is triggered once a person sized object is seen walking from a zone to another zone
  - Intrusion; an alarm is triggered once a person sized object is seen entering an area





**Fire Alarm System**

The fire alarm system consist of all the different devices working on detection, and alarming of fire. Early detection plays a vital role in providing enough time for people evacuation and protecting the safety emergency response personnel.

**Fire Alarm System Detail**

Fire can be detected by multiple manners. These are the different devices:

- Smoke detector, Heat detector, Smoke and heat detector
- Beam detector with its beam reflector; it is used for high ceiling rooms because a normal smoke detector will not be efficient, Duct smoke detector; it is used to detect smoke in a duct
- Linear heat detector; it is used for really high ceiling, it analyses the composition of the air
- Laser smoke detector; works like the beam detector but the reflector is inside the laser smoke detector. It is mainly used in Data Centers
- Manual pull station; for manual alarm triggering

**Fire Detection System**

For warning people and security for a fire there are different devices:

- Horns
- Strobes
- Horn and strobes
- Emergency announcement; i.e. Public address system which will be detailed in the next subchapter

**Public Address System**

The public address system is an electrical sound amplification and distribution system. It can provide multiple function which can be:

- Boarding announcements (for airports and railway station for example)
- Individual calls
- Employee notification
- Safety and security calls
- Background music into selected areas
- Call to prayers



**Physical Security**

Physical security equipment are used to manage the in/out flow of pedestrians and vehicles into the site.

- The system consists of a combination of road blocker, barriers, gates, bollards, tier killers, speed bumps
- Some equipment such as road blockers are requested to be crash rated depending on the site.
- Road Blockers:
  - The road blocker is made of reinforced steel.
  - Crash rated units prevents potential intruder in their tracks.
- Bollards:
  - A Vertical Post, used as a Vehicle Physical Barrier with multiple usages
  - Traffic bollards are used to control traffic intake size by limiting movements or to control traffic speed
  - Protective bollards are concrete material bollards used to protect buildings or areas from vehicle accident collision or vehicle ramming attacks
  - Rising Bollards are less wide steel made bollards used to dissuade or control traffic. These can be retracted into the roadway to allow traffic to pass, or deployed to stop it.
- Tire Killers is a strategy implemented to kill tires of an intruder vehicle
- Speed bumps are used to reduce the vehicle speed at the entrance and within the site.





### Intercom Systems

- An intercom (intercommunication device), talkback or door phone is a stand-alone voice communications system for use within a building or small collection of buildings, functioning independently of the public telephone network. Intercoms are generally mounted permanently in buildings and vehicles. Intercoms can incorporate connections to public address loudspeaker systems, walkie talkies, telephones, and to other intercom systems. Some intercom systems incorporate control of devices such as signal lights and door latches.

### Master Clock Systems

- Our Master Clock system enables the Airports to synchronize time throughout the facility by using a global positioning system (GPS) receiver that serves as its own timeserver and allows Airport to offer the airport accurate presentation of information which is currently one of the major objectives of airports globally.
- Our Solution guarantee an accurate time source for all airport network components such as AODB, EVIDS, CUTE, Information Kiosks, RMS, LAN routers and switches, Telecoms equipment and any other required network server or device which are mission critical for the Airport Operations.

### Video wall and displays

The video wall is considered as the graphical interface between the systems and command center operators.

- Designed to help the center occupant to have access to general information in addition to local information displayed in front of each operator.
- Real projection, LCD and LED type can be implemented depending on the wall size and applications.
  - The video wall can be integrated with CCTV and other AV systems to have more efficient and flexible systems.



### Wireless LAN

Improve your infrastructure to empower secure, smooth and scalable mobile experiences. Based on the rapid changing business environment; organizations are looking for mobility solutions to help them connect with their customers, employees and partners more closely while preserving a secure and manageable network infrastructure. Our advanced wireless services support companies maintain their ingenuity, and agility.

### VOIP Management

Voice over IP (VoIP) is a methodology and group of technologies for the delivery of voice communications and multimedia sessions over Internet Protocol (IP) networks.

PSS offers entire voice collaboration which helps to integrate the analog phones, IP phones, Instant Messaging, Fax, Contact center, Service billing and recoding, Teleconference and presence, unified call managers which covers all your business voice requirements. It also provides the private branch exchange solutions (PBX) and interfaced with public switched telephone networks (PSTN).

### Storage Solutions

#### In Building Solutions (GSM, TETRA)

With the advancements in Mobile technology and radio access networks, the cellular communication becomes a daily activity among the all fields of people in the society.

Our RF Team will follow the best recommend practices in the antenna foot prints and hand-off strategies. These integrated IBS solutions will help to provide the coverage for GSM, CDMA, TETRA, LTE, DAS over your building premises with minimum cost impact.

### Rack Mounted & UPS systems.

PSS believes that UPS for use with servers, storage systems, network equipment and other critical devices vital to your business network. We recommend the surge protection with proper backup will help our clients with maximum availability and minimum down time.

### Equipment Racks and Enclosures

Equipment racks are used in wiring closets and open environments where there is no need for aisle containment. PSS offers a wide variety of racks which includes open racks, server enclosures and network cabinets.





**Data Protection and Secure Internet Gateway**

Data Security and secure internet gateway is crucial factor of business success. PSS solutions protects data from destructive forces and from the unwanted actions of unauthorized users which help you to thrive the success.

PSS offers a wide variety of security related services which include data encryption, data protection, backup, firewall protection, De-militarized zones, Load balancer based on the client requirements and industry standards to achieve best quality of service.

**Data Center**

Data Center is most important part of ICT infrastructure, we understand your business outcomes and bench marks. Our most experienced experts whom work along with you to build the data center; the state of art.

We believe that our client’s turnkey projects are their strategic advantage. So the infrastructure should be of minimum Capex and Opex with optimized solutions that will help our clients to reach easily the breakeven points and maximum return over their investments. We also assist our clients in building a true software defined Data center.

**OSP/ Back Bone Cabling**

Backbone cabling is the inter-building and intra-building cable connections in structured cabling between entrance facilities, equipment rooms and telecommunications closets. Backbone cabling consists of the transmission media, main and intermediate cross-connects and terminations at these locations.

PSS understand that these ICT infrastructure is vital for your network. We always recommend the best in class fibers which can even survive in rash environments according to industrial standards. Our experts will design the infrastructure with minimum bend loss and terminations such that maximum performance of the network.

**ISP /Horizontal Cabling**

The portion of telecommunications cabling that provides connectivity between the horizontal cross-connect and the work-area telecommunications outlet. The horizontal cabling consists of Transmission media, the outlet, the terminations of the horizontal cables, and horizontal cross-connect.

PSS offers wide variety of cabling solutions include CAT 5, CAT 5A, CAT 6, Single Mode & Multimode Fiber depending on the application and uses by the client. Our Cabling Engineers provide the solutions specific to the industry and based on the distance between the telecom room and outlets. We always conduct the Fluke test to ensure that all loss should be in acceptable range.

**Audio Visual & IPTV Systems**

**Projection Systems , BGM , Visual Displays**

**Indoor Projection Systems**

- This aims to can view various kind of sources to be projected on projection screen .

**Outdoor Projection Systems**

This aims to can view various kind of sources to be projected on outdoor areas like building walls.

**Hotel Services on Screen**

A unique screen to showing any feed back sources such us IPTV ,Digital signage players ,AV etc..

**IP Based PA/BGM System**

For standard voice announcement systems to voice alarm evacuation through IP Network. Also we can configuration it with AZAN and time prayer





Building Controls & Automation Systems

PSS provides a future proof, scalable building management and Automation Control system that monitors controls and operates a wide variety of Building Systems like HVAC, Lighting Management, SCADA, Access Control, CCTV, Fire Alarm System, Power systems. PSS understands the customer's needs and provide customizable Monitoring, Controlling and Reporting features for all these Systems. PSS integrates these systems using standard industrial open standards protocols like BACnet, Lon, Modbus, SOAP, XML and Device net. PSS provides building management system (BMS) with a project-specific graphical user interface to provide a complete overview of the entire system whenever required. Dynamic Vector based colour graphics allows for monitoring and operation of the system without Specialist computer skills. Overall solution is highly scalable and can manage for thousands to millions of Data points.

HVAC : Including control of its various pieces of equipment such as:

- ✓ Chillers
- ✓ Boilers
  - ✓ Air Handling Units (AHUs)
  - ✓ Roof top Units (RTUs)
  - ✓ Fan Coil Units (FCUs)
  - ✓ Heat Pump Units (HPUs)
  - ✓ Variable Air Volume boxes (VAVs)

Other systems that are often controlled and/or brought under a complete automation system include:

- ✓ Lighting Management System
- ✓ Power monitoring
- ✓ Security
  - ✓ Close circuit video (CCTV)
  - ✓ Card and keypad access
  - ✓ Fire alarm system
- ✓ Elevators/escalators
  - ✓ Plumbing and water monitoring
  - ✓ Elevators Systems





Execution Pictures

