

# retroSPEctive

**OVERVIEW:** Curation of trendy, fast fashion women's eyewear collection at an affordable price exclusively designed for NVI

## COLLECTION FEATURES:

Thin metal fashion frames, oversize metal shapes

## RETAIL DESIGN INSPIRATION:

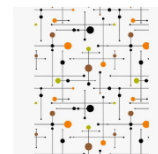
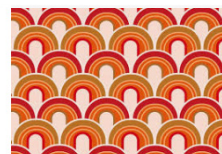
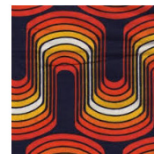
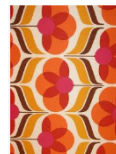
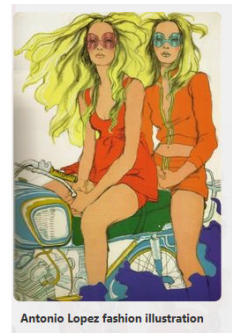
- Think 1970's "Charlie Girl"
- Combination 70's glam along w/Boho (eclectic mixture)
- Chloe ads – ethereal Boho
- Vintage Laura Biagotti eyewear
- Vintage Halston
- 1970'S Vogue fashion patterns

## PEOPLE:

- Bianca Jagger circa 1970's
- Jerry Hall circa 1970's
- Talitha Getty
- Rachel Zoe
- Ali Wong
- Zendaya
- Zoe Kravitz

## ART:

- Fashion Illustrator Antonio Lopez



## **Product Collection**

- **Metal Styles**
- **Vintage styling**
- **Oversized**
- **Women's only**



# Frame Board Header

## In-store and close-up example

