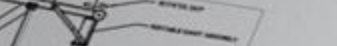


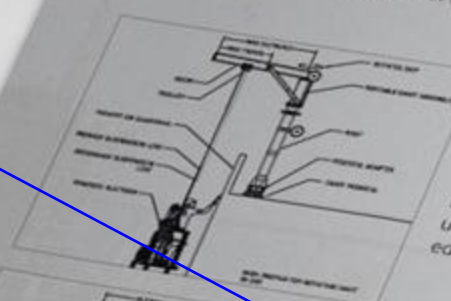
## RIGGING METHODS:

**METHODS:**

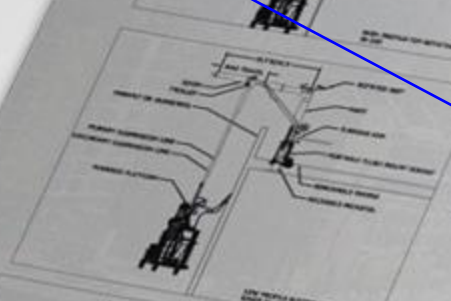
Each of the previous mentioned categories of Davits can be designed by Lynn Safety to suit ground launching (ground rigging) or roof launching (roof rigging) based on the buildings conditions.



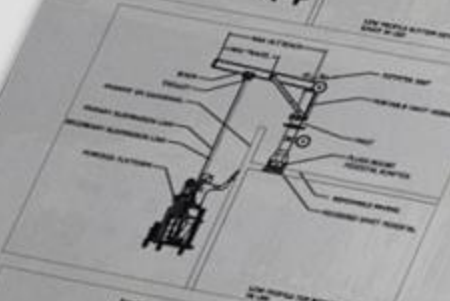
High Profile



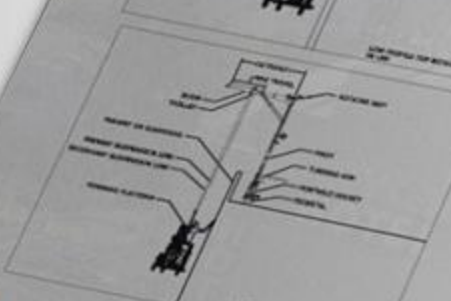
High Profile (Roof Launched) Davits are designed to launch the platform from the roof. Since the platform must be maneuvered over the parapet or wall and outbound, roof launched davits must also be designed for ease of rotation under a load, with no more than 40 pounds of force generated by a worker.



Low Profile (Ground Launched) Davits are designed to rig the platform on the ground only level below only. Low Profile davit masts are typically shorter and easier to use.



Top Rotating Davits are davits that have been designed with a davit mast, davit boom, and davit base where the davit boom (top portion of the davit) is rotatable.



Bottom Rotating Davits are davits that have been designed with a davit mast, davit boom, and base of a davit where the base is designed to rotate."

## DESIGN CONSIDERATIONS:



When designing for a Davit System, Lynn Safety takes multiple factors into account. First and foremost is whether the building's structure can support a davit load. If a structural engineer is contracted for the building, our engineers will work hand in hand to determine whether a davit system is acceptable and what type of installation method is practical. We will provide all of the data necessary for your engineer to check the structure. If a structural engineer is not contracted for the building, our engineers will check the strength and capacity of the building's structure to confirm that a davit system is appropriate for the building. Once deemed acceptable, our design team coordinates the davit design with you and your team to work together to design the best system for your building and to your satisfaction. Lynn Safety provides Design services to work in conjunction with you to determine the most cost effective, safe, and end user friendly system for your building.

For categories of installation of Pedestals (davit bases), see Lynn Safety's Pedestal Catalog.

For types of equipment that can be suspended from a Davit System, see Lynn Safety's Suspended Equipment Catalog.



All davits over 140 pounds are required to be raised in the position by mechanical means.  
All davits over 80 pounds are required to be equipped with a means of transportation which keep the center of gravity of the davit at or below 36" above the safe surface during transport.  
All Davit equipment is load and function tested by Lynn [redacted] Safety field technicians to confirm that the equipment was installed and manufactured properly.



zoom out a bit to see the full platform at the bottom of pic

change "only" to "or"

```
remove "
```