

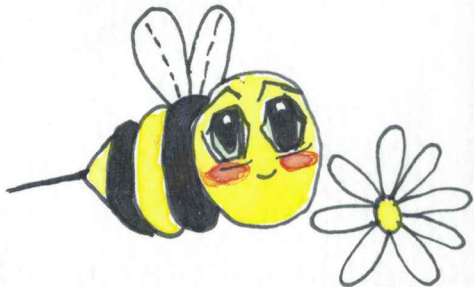
YOU'RE SO SWEET
I CAN BEAR-LY
STAND IT



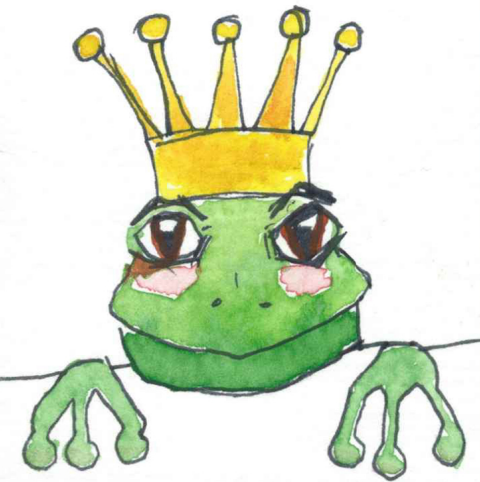
WOOD YOU BE MY
VALENTINE?



I'M SO HAPPY TO BEE
YOUR FRIEND



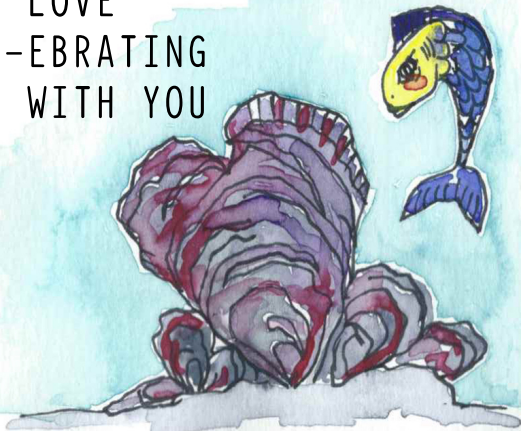
YOU
RULE



I'M NOT LION WHEN I
SAY YOU'RE THE
COOLEST



I LOVE
SHELL-EBRATING
STUFF WITH YOU



LOVE YA
MEAN IT



HELLO FRIEND



YOU'RE A KEEPER



I THINK YOU
ARE TURTLE-Y
AWESOME

