

Simon® Main swinger

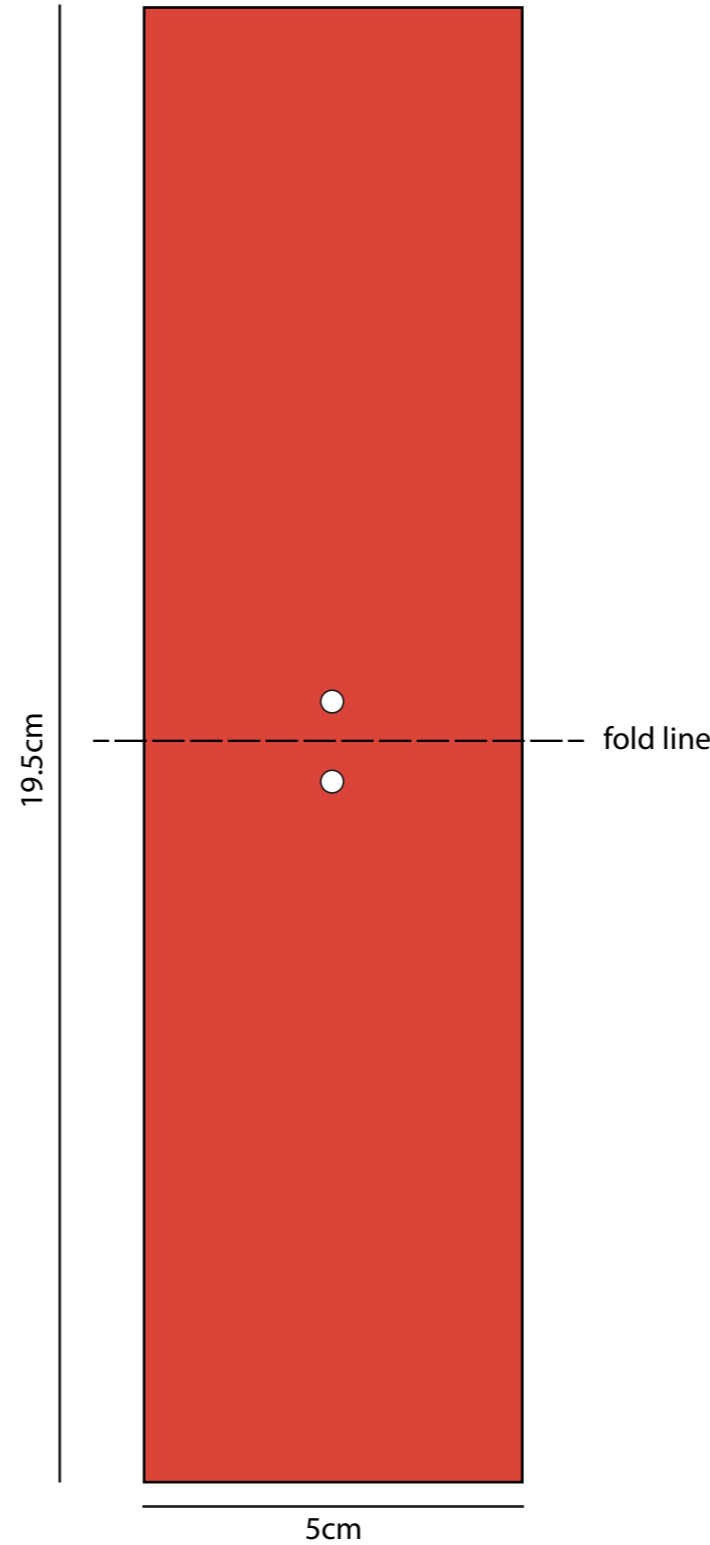
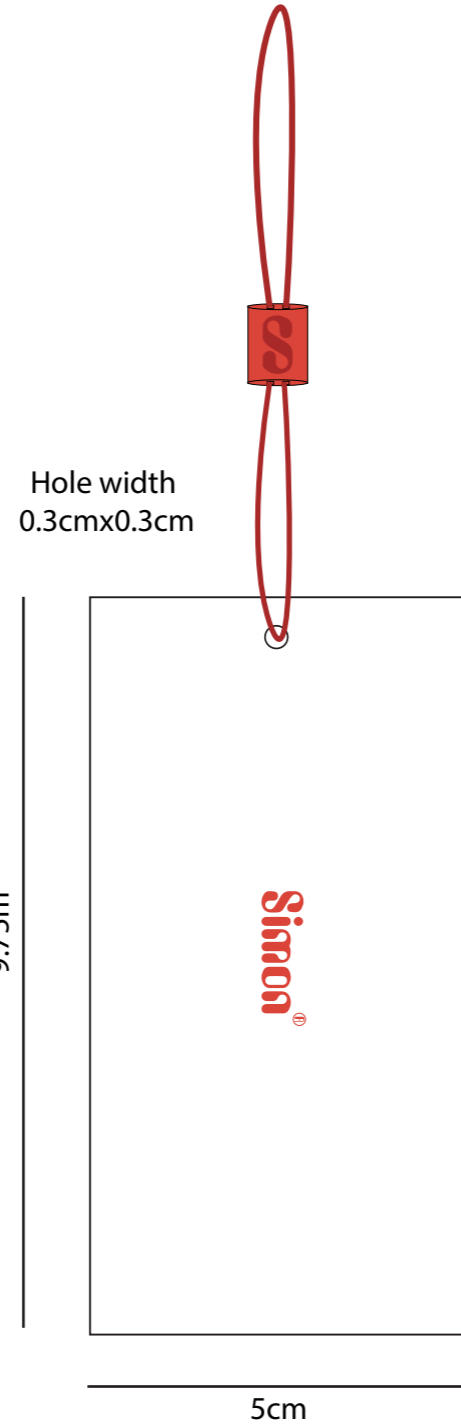
Toggle size 1.5cm Length
0.9cm width - cylinder shape.



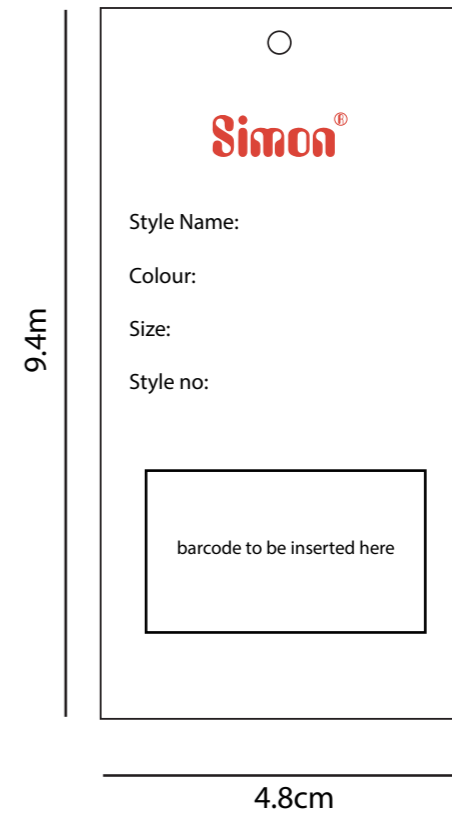
Plastic toggle to be Fiesta Red.
Emboss or deboss a 'S' on the toggle



Cord to be able to go through middle as shown on photo.
Cord length to be 20cm, folded finished length 10cm.
Drawcord colour Red fiesta.



inside of Swinger to be fiesta red



Additional card to be inserted inside - all attached together through hole with cord.

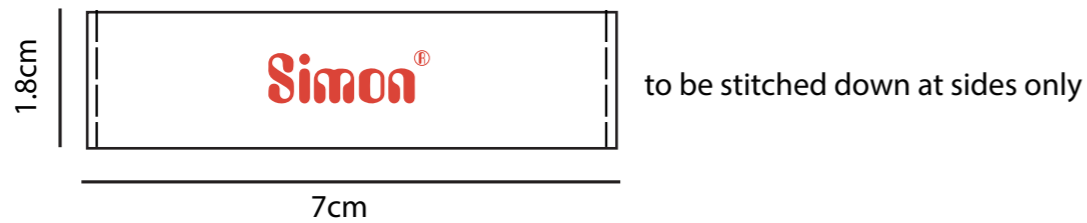
Font Name: Amelia Regular
www.linotype.com



Simon® Woven labels

Back neck label

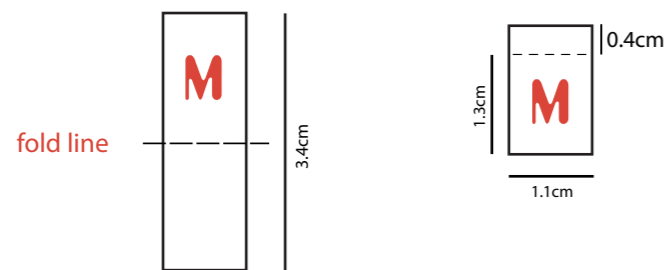
0.25cm at end needs to be folded over before stitched at edges - finished length is 7cm



Woven label must not be frayed on any edges
White back neck label with Red text

Size Tab

White Size tab label with Red text



Size label to be folded in half & attached at top.
0.4cm allowance for stitch

S
M
L
XL
XXL

How label & size tab should look finished



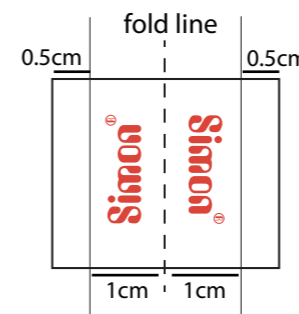
Red must not show through on the white label - see photo of how sample label is underneath

'S' embroidery

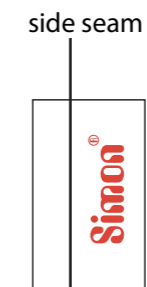


'S' embroidery is Fiesta Red x4 size options
Any additional colours will be advised separate

Side woven Tab



woven tab for side of garment
label to be 1cm shown on outside of garment.
label to be folded - as shown above.
0.5cm left at either side to be inserted into the side seam.



0.5cm allowance from each side



how woven side label should look

white woven tab with fiesta red embroidery

Plastic x4 holed buttons



dtm body button

Matt plastic x4 holed buttons
branded simon.
Simon text to be debossed into button.
Buttons stitched on polo must be stitched straight as shown on cad and not X stitch.
Button size to be 12mm

Fiesta Red

