



eBoard LED   
ANDROID

# MULTI TOUCH SCREEN

The right screen for all purposes





Unlimited Possibilities With Your Imagination



eBoard is an integrated Interactive Touch Screen that utilises IR Touch Screen Technology.

Its applications are limitless, ranging from educational experiences, presentations, boardroom and conference room collaboration to being used as interactive information kiosks. eBoard's touch technology assures accuracy, responsiveness and sensitivity whilst delivering full High-Definition images in almost any environment.



Android Tablet Platform plus Wi-Fi Display

A1-SYS concepts and ideas are

# EASY · SIMPLE · SMART

Captivate your audience when you open applications, navigate the web, use the virtual keyboard to type information, annotate over the displayed information or utilise existing interactive whiteboard software. The eBoard simply plugs into your laptop, PC, or Mac via the supplied USB cable.

You can also connect wirelessly to your iPad for total control at your fingertips.

eBoard allows you to access content over the network or internet then add hand written comments with the included eBoard pen tool. You can access content including PowerPoint, photos, videos, e-learning, video conferencing or distance learning, online content and more.



ANDROID



Google Play



## Built-In Android Tablet Module

Android platform lets presenter or teacher and student access multimedia content containing videos, slideshows, e-books, PDFs, text, audiobooks, and web links without PC or MAC. Access to Google Play with 70,000+ Android Apps.

SPEC CATEGORY	Android Tablet Module Feature
OS	Android 4.4
OSD	Multi-Language
Google Play	Yes: More than 700,000 Apps & Movie, Songs, Books available
System Upgrading	By u-disk or Micro SD card
Local Media Playback	Video/Audio/Picture
Internet Media Playback	Over Internet, Video/Flash/Audio/Picture (eBoard support Youtube, Vimeo, TED, ABC view etc...)
Interface	48PIN PC Connector
CPU	RK3288 quad-core ARM Cortex A17 up to 1.8GHz
GPU	Mali-T764, OpenGL ES1.1/2.0/3.0
RAM	2G Byte DDR3 up to 1066MHz
Flash Memory	16G Byte EMMC Flash
USB	support USB2.0/1.1, 2 ports
Mirco SD Card	1 Slot : Micro SD card (FAT, FAT32,NTFS, up to 32GB)
Network	Wi-Fi: 2.4GHz/5.8GHz dual band 802.11 ac/a/b/g/n compliant Built-in module, Need 1 ANT
	Bluetooth 4.0
	RJ45 Ethernet 1 Port: 10Mbps, 100Mbps, 1000Mbps Base-T

## Key Features & Benefits

Feature	Description
 	<b>High resolution LED screen</b> <ul style="list-style-type: none"> <li>eBoard's Full HD (1920x1080p) or UD (Ultra Definition 4Kx2Kp) LED</li> <li>RGB colour (16,777,216 Colour) 16,000,000-pixel</li> </ul>
	<b>Define the life hours.</b> <ul style="list-style-type: none"> <li>30,000~50,000 hour life with no consumables and no maintenance required</li> <li>The eBoard has a 4T, Level 7 safety-glass screen which is scratch, cut and impact resistant with a toughened frame</li> </ul>
	<b>Anti-Scratch, Anti-Glare / 178Degree Viewing Angle</b> <ul style="list-style-type: none"> <li>eBoard has 178 degree viewing angle ensuring a great view from any position. The toughened anti-glare glass enables you to use the screen under any lighting conditions, minimising eye fatigue and enhancing the audience's viewing experience.</li> </ul>
	<b>Interactive Touch, Infinite Options</b> <ul style="list-style-type: none"> <li>Upto 20 simultaneous touch and gesture capability</li> <li>Light touch sensitivity, no pressure is required</li> <li>Precise touch resolution with touch response time less than 6ms</li> <li>Soft write on the screen: Anti-noise write technology, right and left hand mouse buttons, drag &amp; drop, keyboard character recognition function</li> </ul>
	<b>eShare Wi-Fi Display</b> <ul style="list-style-type: none"> <li>eShare mirrors eBoard's android display to your android, apple devices. Also, it mirrors windows PC to eBoard.</li> <li>Display from the mobile content such as a photo, music, video.</li> <li>Remote Control eBoard from mobile device.</li> <li>Android mobile device camera view on eBoard.</li> </ul>
	<b>TV Mirror on your mobile (Apple or Android) Device</b> <ul style="list-style-type: none"> <li>eShare TV mirror allows you to display your eBoard image on your mobile device.</li> <li>Annotate from your mobile device onto the eBoard in real-time</li> </ul>
	<b>AV Sources / Media Input</b> <ul style="list-style-type: none"> <li>3 x HDMI (84inch has 3x HDMI + 1 x HDMI(4K x 2K Display)</li> <li>3 x VGA Input &amp; 1 x VGA Output)</li> <li>CVBS</li> <li>7 USB ports for content play</li> </ul>

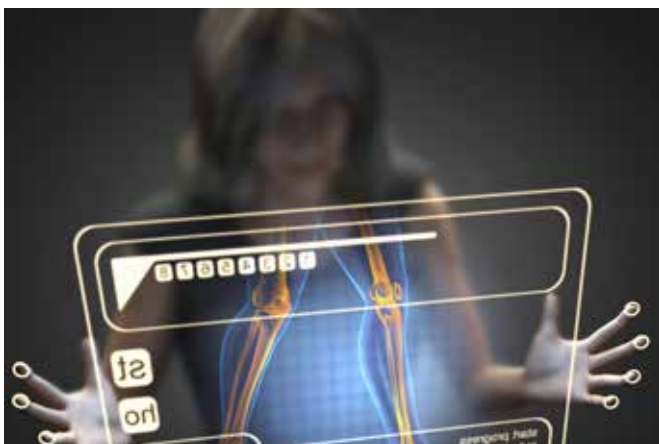


## Applications



### ENHANCE LEARNING

- Allows children to learn and work together simultaneously
- Develops sense of sharing and integrates technology into all aspects of the curriculum
- Encourages students to exchange their ideas easily, supporting open discussions
- Helps students to work independently and interact with the teacher at the same time
- The eBoard experience is just like using huge Android Tablet with access to Google Play, educators can create powerful education content using game based, productivity and annotation applications.



### PROFESSIONAL ARENAS

Use more powerful applications when designing, calculating, modelling, or assessing medical situations, to create a 'hands on' experience, or for teaching and demonstration purposes.

#### Conferences & Meetings

- Use it as a presentation medium; share documents, annotate or edit in real time, and brainstorm ideas
- Allows you to interact with other people remotely using teleconference, or via an existing network.



### BREAK THE ICE

Engage your customers by placing boards in accessible locations such as lobbies, cafes, or museums,

#### Entertainment Centre and theme park

- Can be used for children's games, playing video clips, music albums, floor directory information
- Fantastic for displaying interactive information such as attraction guides, photo finders, restaurant bookings and menus, transport time tables, event lists and more

#### Events & exhibitions

- Eye catching and intuitive
- Immediately engages customers and visitors with the products or services



### ENGAGE

Engage users and customers by allowing them to interact with photos, videos, documents, webpages, global maps and all kinds of applications.

#### Hospitality

- Guests can choose their room and check in, compare rooms, and view facilities .
- Customers can look up sightseeing options, restaurants, entertainment, shopping locations and check flight times from their rooms or lobby.

## Options

### 3D Display Option



- **Hologram**  
This unique technology makes possible to walk through the image, touch it or interact with it. Streams of barely visible fog becomes an image carrier and their laminar structure allows to display high resolution contents. Our patented way to produce laminar airflow for very long distance from the output makes Leia Display the most steady mid-air screen on the market.
- **LDS** is a device that allows to display mid air image 95cm x 70cm or 3m x 2.5m projection surface. This high impact media for Education, Advertising, Communication, Marketing and many more...

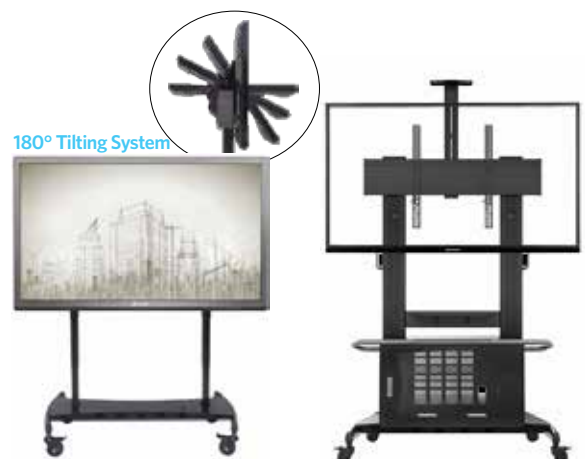
### PC Module Option



SPEC CATEGORY	PC Module Option	
	eBoard 55 L, 65 L, 70 L	eBoard 84 L (4Kx2K Display Support)
Model	MT08-01	MT08-02
CPU	Intel Core i5	Intel Core i7
Socket / Chipset / Board Interface	Intel Socket 1155 / Intel H61 Express / 2 Slots for DDR3 1333/1600MHz	
RAM	4G DDR3	8GDDR3
HDD	SSD 256GB	
Graphic	Integrated Intel HD Graphic	Independent Graphics GT745M
Sound	Integrated High Definition Audio Stereo	
Network Card	10/100/1000M Adapter & IEEE802.11 a/g/n (2.4G/5G) Wi-Fi Adapter	
Bluetooth	Bluetooth 4.0	
USB	USB2 4 Ports / USB3 2 Ports	
Interface	HDMI / VGA / Mini Display / MIC / Speaker	

### Mobile Stand Options

- All of the eBoard's sizes can be securely mounted on this stylish yet robust mobile stand designed for optimum viewing height.
- All power and connectivity cabling and even a four way power adaptor can be hidden from view in the cable management compartment which has simple front access and a removable cover ideal to place a PC inside it.
- Supplied with 5cm heavy duty wheels, locking and 4 height adjustable feet as standard. It allows you to adjust height with winch handle.



# AnySync



ANYSYNC : HDMI Wireless Display Transmission Presentation tool

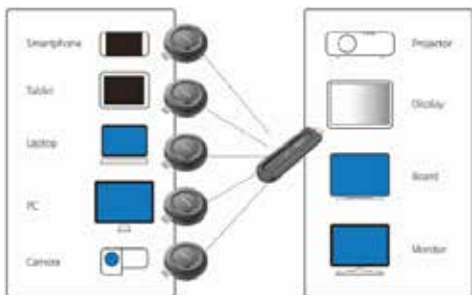


• Transmitter



• Display Receiver

- ANYSYNC can transmit video, audio and any application from laptop or hand-held devices to TV, Monitor and Beam projector.
- Without wireless AP, high quality video(Full HD) & sound transmission in real time.
- Actual mirroring technology showing all contents as it is.
- Wide compatibility that is not limited on certain products.
- The world's first N : 1 switching
  - \* The Transmitter has screen transfer function and screen change function when the Transmit button is pressed.
  - \* 254 Transmitters can be connected with 1 Receiver.
- No installation of S/W, No complicated set-up



All the devices compatibility



N:1 : 1:800 mirroring by simply one-click



No need S/W installation or complex setting



No need wireless AP

Transmitter		Receiver
Size	82 X 72 X 20 mm	110 X 30 X 10 mm
Transmitting Function	Real-time wireless mirroring Image : 1080p supported Sound : Mono, Stereo supported	Image : 1080p supported Sound : Mono, Stereo supported Automatic recognition of transmitter
Compatible Device	HDMI supported PC, tablet, camcorder, game console, etc. Smartpad such as Galaxy Tab, iPad, and smartphone supported if gender charger is connected	HDMI input supported devices (LCD TV, monitor, electronic board, beam projector, etc.)
Interface	HDMI	HDMI
Communication	Direct connection of Wi-Fi 802.11n 5GHz with receiver	Direct connection of Wi-Fi 802.11n 5GHz with transmitter
Power Supply	Built in rechargeable battery with maximum 3 hrs	Uses external power supply through micro USB
Communication distance	Recommended distance up to 10m (It can be longer depending on user's environment)	



• Charging Cradle

- Charge and Store AT ONCE
- Storing 4 transmitters and accessories
- Charging 4 transmitters simultaneously (time for charging: Approx. 2.5Hrs)
- Available to store HDMI extension cable and converter

Charging cradle	
Size	309mm x 120mm x 110mm
Weight	800g
In/output configuration	DC Jack(x1), micro 5pin USB terminal(x4)
Input	DC 5V/6A
Output	5V/3.6A (0.9A x 4)
Max. Power Consumption	18W
Operating temperature	0°C ~ 40°C
Charging time	Approx. 2 Hours 30 minutes

# A1 LED eBoard SPECIFICATION



SPEC CATEGORY			MODEL			
			eBoard LE55 L	eBoard LE65 L	eBoard LE70 L	eBoard LE84 L
PANEL	DID PANEL	INCH	55INCH	65INCH	70INCH	84INCH
		RESOLUTION	1920 x 1080			3840 x 2160 (4K x 2K)
		BRIGHTNESS	400	360	400	350
		CONTRAST RATIO	1200:1 (Typ.)	1400:1 (Typ.)	4000:1 (Typ.)	1600:1 (Typ.)
		VIEWING ANGLE	178º / 178º			
		PANEL RESPONSE TIME	8ms(Typ. GTG)			
		ASPECT RATIO	16:9			
		REFRESH FREQUENCY	60hz		120hz	
		BEZEL COLOR / TYPE	Grey / Aluminium & Metal Frame Round			
		PANEL	Min 30,000 hour			
AD BOARD	INPUT & OUTPUT	HDMI	3 HDMI inc 1 Port MHL			3HDMI + 2Kx4K HDMI
		VGA(DSUB)	4 Ports (3 Input, 1 Output)			
		CVBS	1 Port			
		R/L CVBS	1 Port			
		USB Side Panel	3 USB Ports (1 x External PC, 1 x USB2 & 1 x USB3 Ports for Mdeia Player)			
		USB Front	3 Ports (1 x USB for Embeded PC, 2 x USB2 Interface for Embedded Android)			
		RS232C (9600 bps)	1 Port for Control			
		WAN (RJ45)	1 Port for WAN Connection			
		AUDIO	Stereo PC Audio IN / Earphone OUT / Coaxial Digital Audio OUT			
AIRPLAY Wi-Fi Display		eShare	Stream pictures, videos, music, and documents from mobile device to eBoard / Share Content / Remote Control / Stream eBoard Disply to Mobile Device / Support IOS, Android, and DLNA Clinet			
OPERATING SYSTEM		ANDROID PLATFORM	Android 4.2.1, ARM Cortex A9 Dure Core CPU, Quad Core GPU, 1.5G RAM, 8GB ROM / Wi-Fi or Network Cable Connection for the Internet			
TOUCH SCREEN	TYPE	IR sensor				
	RESOLUTION	32767*32767				
	TOUCH ACCURACY	± 5mm				
	GLASS	Level 7 - 4T Tempered glass				
	TOUCH POINT	Upto 20 Points Touch (Basic 16 Touch / 10 Writing)				
	DETECTION METHOD	Finger, brush-pencil, special pen or any opaque object				
TEMP.	TEMP / HUMIDITY	0° - 40° / 10% - 90%				
POWER	POWER(AC)	100V ~ 240V				
	POWER CONSUMTION / STAND BY	190W	250W	240W	550W	
		StandBy UNDER 0.5W				
DIMENSION	W X H X D (mm)	1315.3 x 804.6 x 97.5	1544.4 x 936.9 x 94.9	1649.8 x 999 x 98.5	1978.2 x 1186.7 x 113.8	
PACKING	SET BOX (WXHxD)	1431 x 225 x 960	1665 x 1077 x 268	1787 x 1140 x 275	2170 x 1460 x 320	
WEIGHT	NET WEIGHT	50kg	70kg	75kg	118kg	
	GROSS WEIGHT	58kg	77kg	85kg	148kg	
OSD	LANGUAGE	Multi Languages				
ACCESSORIES			Power / D-Sub / HDMI cable, User's Guide, Remote control & Battery etc			



Learn more at [www.a1-sys.com](http://www.a1-sys.com)  
 For additional questions contact [info@a1-sys.com](mailto:info@a1-sys.com)  
 A1 SYSTEMS PTY LTD / ACN 114 333 229

