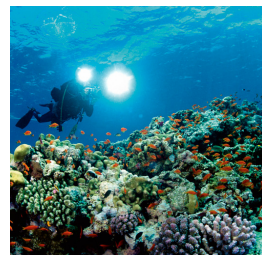
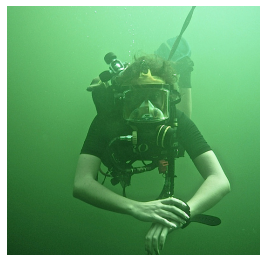
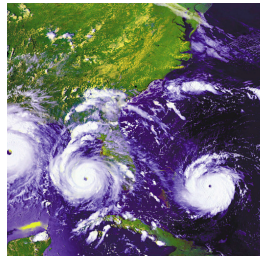
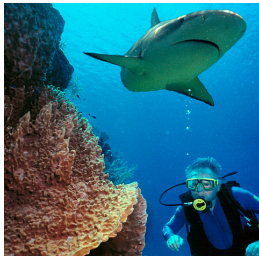


MPS

UNIVERSITY OF MIAMI
ROSENSTIEL
SCHOOL of MARINE &
ATMOSPHERIC SCIENCE



MASTER OF
**PROFESSIONAL
SCIENCE**





The Master of Professional Science (MPS) degree prepares students for science careers in industry, government, and non-profit organizations, where employment demands are growing. MPS degrees were developed and implemented nationally in response to employer demands for well-rounded, highly trained employees with a breadth of knowledge and practical skills to address emerging environmental issues and improve the management of natural and cultural resources. The curriculum is structured to allow students to complete their degree in as little as 12 months, with the training and real-world experience necessary to prepare them for careers in today's professional science job market.

ABOUT • MASTER OF PROFESSIONAL SCIENCE PROGRAM



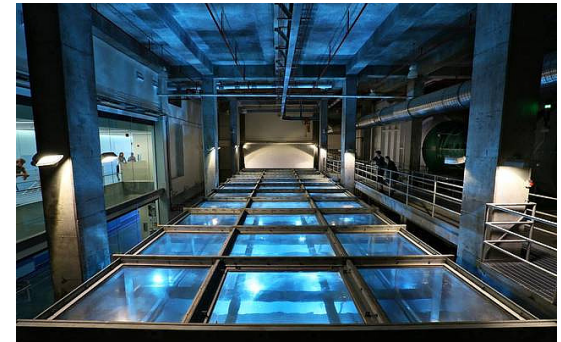
ATMOSPHERIC SCIENCES

Broadcast Meteorology

Broadcast Meteorology is a rapidly growing and evolving field and one of the largest sources of employment in the private sector of meteorology. This track prepares students for both on-camera and behind-the-scenes careers in broadcast meteorology, as well as the opportunity to develop the knowledge and training necessary to enter the broader field of science journalism.

Computational Meteorology & Oceanography

This track provides training in the computational science aspects of meteorology and physical oceanography, while simultaneously allowing students to develop workplace skills highly valued by employers. Theoretical coursework is combined with hands-on training in high performance computing, data analysis, and visualization.





Climate & Society

This program emphasizes the relationship between weather, climate, and society. The financial consequences resulting from natural and anthropogenic climate change, rising sea levels, and extreme weather events pose important scientific and socioeconomic challenges, both in terms of urban planning and adaptation to these changes. Employers in government, insurance, energy, and a number of other weather-impacted industries are seeking professionals who are fluent in both the physical sciences and socioeconomic implications of future changes in climate.

Weather Forecasting

This track is designed for students with an undergraduate degree in meteorology who are seeking advanced training in applied weather forecasting. The curriculum includes practical training in the analysis and preparation of weather forecasts, the effective use of numerical models, satellite, Doppler radar, and upper air data, and the application of this information to support a variety of specialized end-users, including agriculture, utilities, insurance, transportation, construction, and other weather sensitive industries.



MARINE ECOSYSTEMS & SOCIETY

Aquaculture

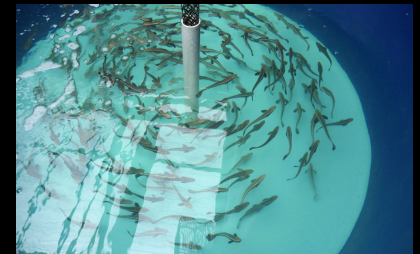
This track focuses on the environmental, technological, social, economic, legal, and political aspects of sustainable aquaculture. The program covers all stages of planning and development, from site and species selection to feasibility studies, resource evaluation, hatchery and grow-out technology, and commercialization. Emphasis is placed on the environmental sustainability of commercially important marine fish species, as well as shrimp and mollusks.

Coastal Sustainability

This track provides students with advanced training in the expanding field of sustainability, with a combined focus on the practical aspects of systems management and the theoretical understanding of whole-systems design and coastal resiliency. The goal of this track is to train future leaders capable of creating innovative solutions to sustainability issues at local and global levels.

Coastal Zone Management

The emphasis of this track is to introduce participants to the legal and governance frameworks unique to fragile coastal areas and the management and sustainability of natural resources in concert with coastal development. Students will also have the opportunity to study specific activities related to coastal management, such as fisheries, marine protected areas, port operations, aquaculture, and cultural resources.



Exploration Science

Exploration Science combines scientific research theory and the ethics, risks, and technologies associated with exploration with an outreach and educational platform that builds bridges between scientists and the general public through experiential and virtual expeditions in ecological, oceanographic, aviation, and diving research.

Fisheries Management & Conservation

Students in this track develop the professional skills required to be a fishery scientist, with curriculum options in fisheries management, fish population assessments and surveys, and quantitative fisheries. Students will learn about the biological, oceanographic, and anthropogenic processes influencing fisheries and the development of policy alternatives geared towards sustainability.



J.D./MPS

Students interested in environmental law can earn a Juris Doctor degree from the School of Law in tandem with a Master of Professional Science in Marine Ecosystems & Society from RSMAS.

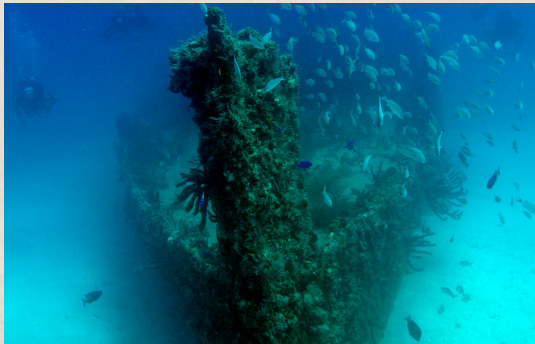


Marine Conservation

This track provides students with advanced training in both the theoretical aspects of marine science and conservation, as well as the practical aspects required to begin a career in this field. Students in this program design a curriculum that emphasizes their personal goals and interests, while focusing on innovative solutions to current marine ecosystem and organism threats. The goal is to advance conservation efforts, scientific literacy and communication, public outreach and integration, and education within the marine realm.

Underwater Archaeology

This unique track focuses on the management of submerged cultural resources and heritage and is primarily technical, with elaborate training in archaeological surveys and techniques, combined with an introduction to the legal and governance frameworks associated with this increasingly important field. Coursework integrates topics such as legal aspects of submerged cultural resource management, maritime history, environmental impact assessment, and remote sensing.



MARINE BIOLOGY

& ECOLOGY

Marine Mammal Science

This is one of the only programs in the nation designed to prepare students for employment in marine mammal management (including associated ecosystems), population assessments, acoustics, and managed care. Coursework integrates topics such as marine mammal medicine and pathology, population assessment and dynamics, state and federal regulations, applied ocean acoustics, research, education, and applied behavior analysis.

Tropical Marine Ecosystem Management

Students in this program gain an advanced understanding of the theoretical aspects of tropical marine ecology, as well as elaborate training in the field, including boat handling, research diving, and nearshore habitat assessments. As one of the only schools in the nation with direct access to coral reefs, seagrasses, and mangroves, students are routinely exposed to these ecosystems, with an emphasis on conservation and management.



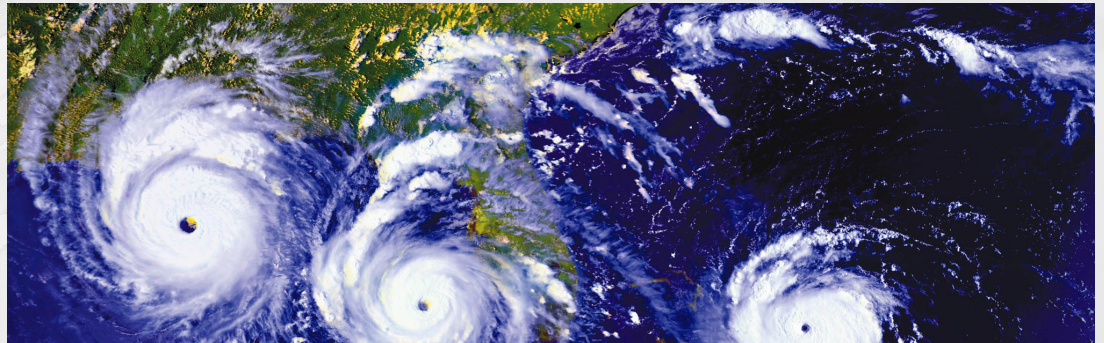
OCEAN SCIENCES

Applied Remote Sensing

The University of Miami is a national leader in remote sensing, and these techniques are an integral part of our modern world, with a dynamic variety of sensors now installed on satellites, airplanes, and drones. This track is tailored to the needs of students, or current professionals, who seek to gain advanced, theoretical knowledge and practical, real-world experiences geared towards a successful career in the field of remote sensing.

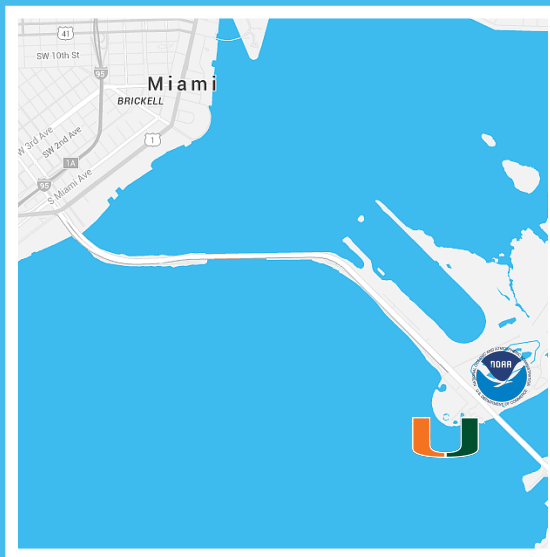
Natural Hazards & Catastrophes

To meet society's need for a skilled workforce, this track trains students to fill positions offered by the private and civil sectors to assess risks and exposures associated with natural hazards. The goal is to provide students with the skills and knowledge necessary to understand earth system natural hazards and the data analytics tools required to assess the associated risks.



REIMAGINE

YOUR FUTURE



N 25° 73 ' 26"
W 80° 16' 27"

4600 Rickenbacker Causeway, Miami, FL 33149 • 305-421-4340 • MPS.MIAMI.EDU •
MPS@RSMAS.MIAMI.EDU