

CHROME

Premium Energy

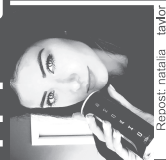
250ML

#POWERTOSHINE

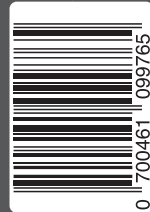
Get the Power To Shine with this drink! Whether you're a model, singer/musician, dancer/performer, athlete or artist, take a photo/video with this can, showcasing your talent. Upload it to your own social media pages using the hashtag #powertoshine. Don't forget to tag us on:

 [facebook: @chromeenergydrink](#)
 [twitter: @chromeenergy](#)
 [instagram: @chromeenergydrink](#)

We then repost chosen submissions to all our pages! Terms & Conditions apply.



Repost: natalia_taylor





BEST BEFORE


 SEE BASE OF CAN

 **115** **KCAL** PER 250ML CAN

 **6%** REFERENCE INTAKE OF AN AVERAGE ADULT

 PLEASE RECYCLE





CARBONATED ENERGY DRINK

PASTEURISED

 RECOMMENDED FOR ADULTS PERFORMING INTENSE PHYSICAL AND MENTAL ACTIVITIES.

VITAMIN INFORMATION

VITAMINS PER 100ML

NIACIN:	7.0MG	(44% NRV)
PANTOTHENIC ACID:	2.0MG	(33% NRV)
VITAMIN B6:	1.4MG	(100% NRV)
VITAMIN B12:	0.5MG	(20% NRV)

(NRV = NUTRIENT REFERENCE VALUE)

INGREDIENTS

WATER, SUGAR, ACID: CITRIC ACID, CARBON DIOXIDE, TAURINE(0.4%), ACIDITY REGULATOR: SODIUM CITRATES, FLAVOURING, CAFFEINE(0.032%), COLOURS: E150C, E101, VITAMINS: NIACIN, PANTOTHENIC ACID (B6), (B12).

NUTRITION INFORMATION

NATIONAL VALUES PER 100ML

ENERGY:	197KJ (46 KCAL)
PROTEIN:	0.35G
SALT:	0.14G
CARBOHYDRATES:	10.8G
OF WHICH SUGARS:	10.8G
FAT:	0.0G
OF WHICH SATURATES:	0.0G

RECOMMENDED PRODUCT TEMPERATURE BETWEEN 0° AND 15°. DRINK RESPONSIBLY. ENERGY DRINK ADVICE AT [DRINKINGADVICE.CO.UK](#). PRODUCED IN POLAND. STORE PRODUCT IN A COOL DRY PLACE. CONSUME MODERATELY.

HIGH CAFFEINE CONTENT: NOT RECOMMENDED FOR CHILDREN, PREGNANT WOMEN OR BREAST-FEEDING WOMEN (32MG/100ML). NOT RECOMMENDED FOR PEOPLE SENSITIVE TO CAFFEINE OR DIABETICS. FOR MORE INFO VISIT [chromeenergydrink.com](#)

ENERGY DRINK