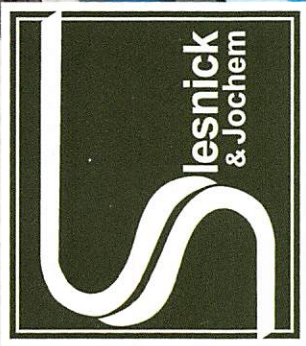


THE ATLANTIS

2025 brickell avenue, #1803 brickell, fl 33129 • \$649,000





GRACIOUS OPEN FLOORPLAN WITH LIVING/DINING ROOM AND OPEN KITCHEN. BRIGHT AND SUNNY WITH NORTH VIEWS TO THE SKYLINE OF DOWNTOWN AND SOUTH/EAST VIEWS TO BISCAYNE BAY. MARBLE AND SOLID WOOD FLOORING THROUGHOUT. SPACIOUS MASTER BEDROOM WITH VIEWS TO THE WATER. VERY LARGE BALCONY FOR ENTERTAINING AND SLIDING GLASS DOORS EXTEND THE LENGTH OF THE APARTMENT. COMPLETELY RENOVATED KITCHEN AND NICELY UPGRADED BATHROOMS.

THE ATLANTIS

2025 brickell avenue, #1803, brickell, fl 33129 • \$649,000



AMENITIES

- Waterfront Olympic Size Pool
- Barbeque Area
- Jacuzzi
- Tennis Court
- Renovated Gym
- Historic "Tiffany House"
- Sky Court Jacuzzi
- Conderge and 24-hour Security



Mia Patch, LCAM
realtormiapatch@gmail.com
C 305 333 7167



SLESNICK & JOCHEM, LLP

YOUR REAL ESTATE SPECIALISTS • slesnick.net • O 305 446 2001

Slesnick & Jochem, LLP 2701 Ponce de Leon Blvd., Suite 200, Coral Gables, FL 33134-6041

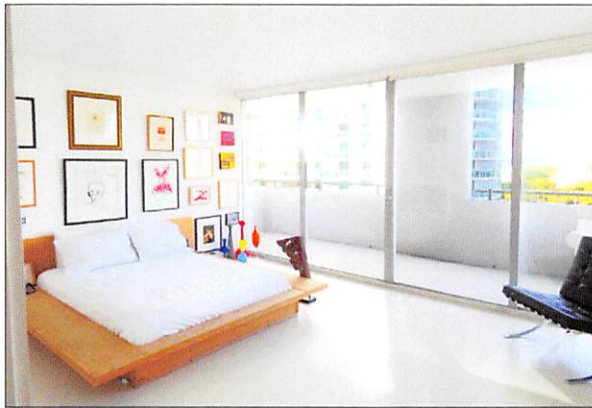
THE ATLANTIS

2025 BRIGKELL AVENUE, #1506, MIAMI, FL 33129 | \$599,000



4 FT

4



THE ATLANTIS

2025 BRICKELL AVENUE, #1506, MIAMI, FL 33129 | \$599,000

THE ATLANTIS IS ONE OF THE MOST ICONIC BUILDINGS IN MIAMI. WITH ONLY 20 STORIES AND 96 UNITS (NO MORE THAN 3 UNITS PER FLOOR), IT OFFERS THE PRIVACY OF HOME LIVING WITH ALL THE AMENITIES OF A BOUTIQUE BUILDING. THIS 2 BEDROOM, 2.5 BATH CONDO IS DESIGNED FOR ENTERTAINING, AND FEATURES SPECTACULAR PANORMIC VIEWS. THE SPACIOUS LIVING/DINING AREA HAS AN OPEN LAYOUT WITH A SOPHISTICATED KITCHEN FEATURING CARRARA MARBLE, SUB-ZERO AND MIELE APPLIANCES, AND WINE COOLER/STORAGE. SLIDING GLASS DOORS IN BOTH BEDROOMS OPEN ONTO A LARGE BALCONY. AMPLE CLOSETS, BUILT-IN BRAZILIAN WALNUT CABINETS, AND SEPARATE LAUNDRY ROOM. SOME RENOVATIONS NEEDED. 2 ADJACENT PARKING SPACES. EXCEPTIONAL VALUE AND OPPORTUNITY TO BUY IN A PRESTIGIOUS BUILDING ON BRICKELL FOR LESS THAN \$360 PER SQUARE FOOT. EASY TO SHOW.

AMENITIES

- Jacuzzi + Olympic-Sized Lap Pool
- Sky Court with Hot Tub/Jacuzzi
- Barbeque/Picnic Area
- State-of-the-Art Tennis Court
- Gym with new Equipment
- Historic "Tiffany House" for Entertaining
- Bicycle/Motorcycle Parking
- Pet Friendly
- 24-Hour Security
- Full-time, On-Site Management



SLESNICK & JOCHEM, LLP

YOUR REAL ESTATE SPECIALISTS • slesnick.net • T 305.446.2001

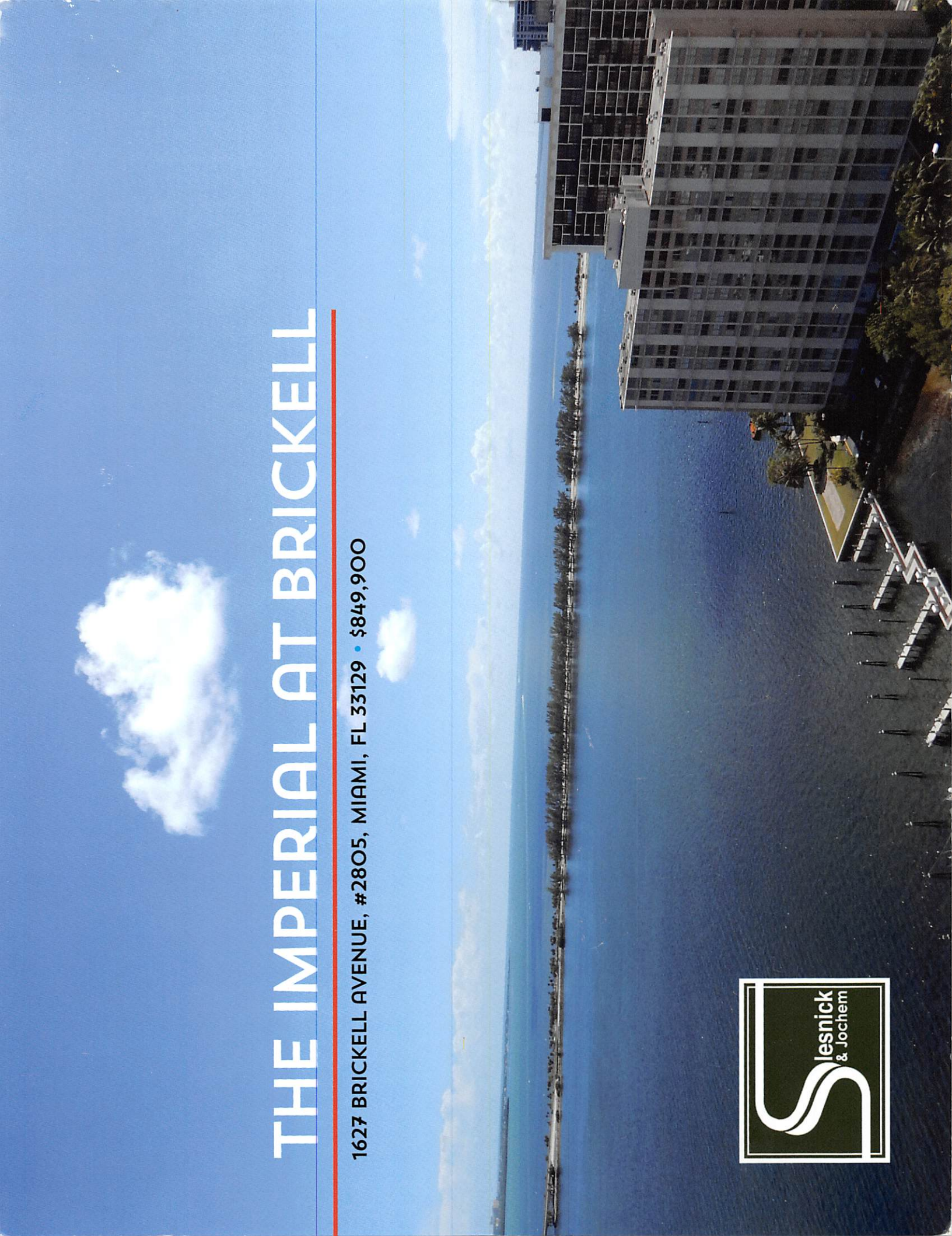
Mia Patch, LCAM
realtormiapatch@gmail.com

C 305.333.7167
O 305.446.2001



THE IMPERIAL AT BRICKELL

1627 BRICKELL AVENUE, #2805, MIAMI, FL 33129 • \$849,900





LUXURY WATERFRONT BUILDING LOCATED ON THE EXCLUSIVE STRIP OF BRICKELL AVENUE SOUTH OF ST. JUDE CHURCH. DOWNTOWN LIVING WITHOUT HAVING TO NAVIGATE THROUGH ALL THE TRAFFIC AND CONSTRUCTION—WALK TO RESTAURANTS, PUBLIX, MARY BRICKELL VILLAGE. ENJOY MILLION-DOLLAR WATER VIEWS FROM EVERY ROOM IN THIS 3 BEDROOM, 2.5 BATH, 1,732 SQ. FT. CONDO. FLOOR-TO-CEILING GLASS IN THE LIVING ROOM/DINING AREA AND IN ALL BEDROOMS. THE DINING AREA LEADS TO A SEPARATE DINING TERRACE WITH SPECTACULAR WATER VIEWS. THE UNIT ALSO FEATURES AN ENDLESS BALCONY.

AMENITIES

- POOL
- TENNIS COURT
- GYM
- MINI-MART
- VALET
- BARBEQUE AREA
- 2 ASSIGNED PARKING SPACES
- PET FRIENDLY

Mia Patch, LCAM
 realtormiapatch@gmail.com
 305 333 7167



THE IMPERIAL AT BRICKELL

1627 BRICKELL AVENUE, #2805, MIAMI, FL 33129 • \$849,900

SLESNICK & JOCHEM, LLP